



# SIRIUS LIGHT



Soft light wallwasher



## Creating the Light of Comfort and Health

Soft Wall Lamp Family Series - Suitable for high-end hotels, villas clubs, high-end residences, to provide

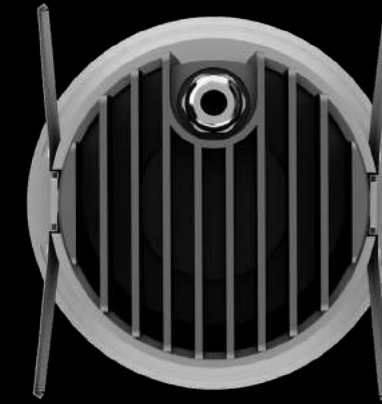
a more comfortable and healthy lighting space for your business life



## Excellent design

From its design proposals to optical and heat dissipation structures to product surface treatment.

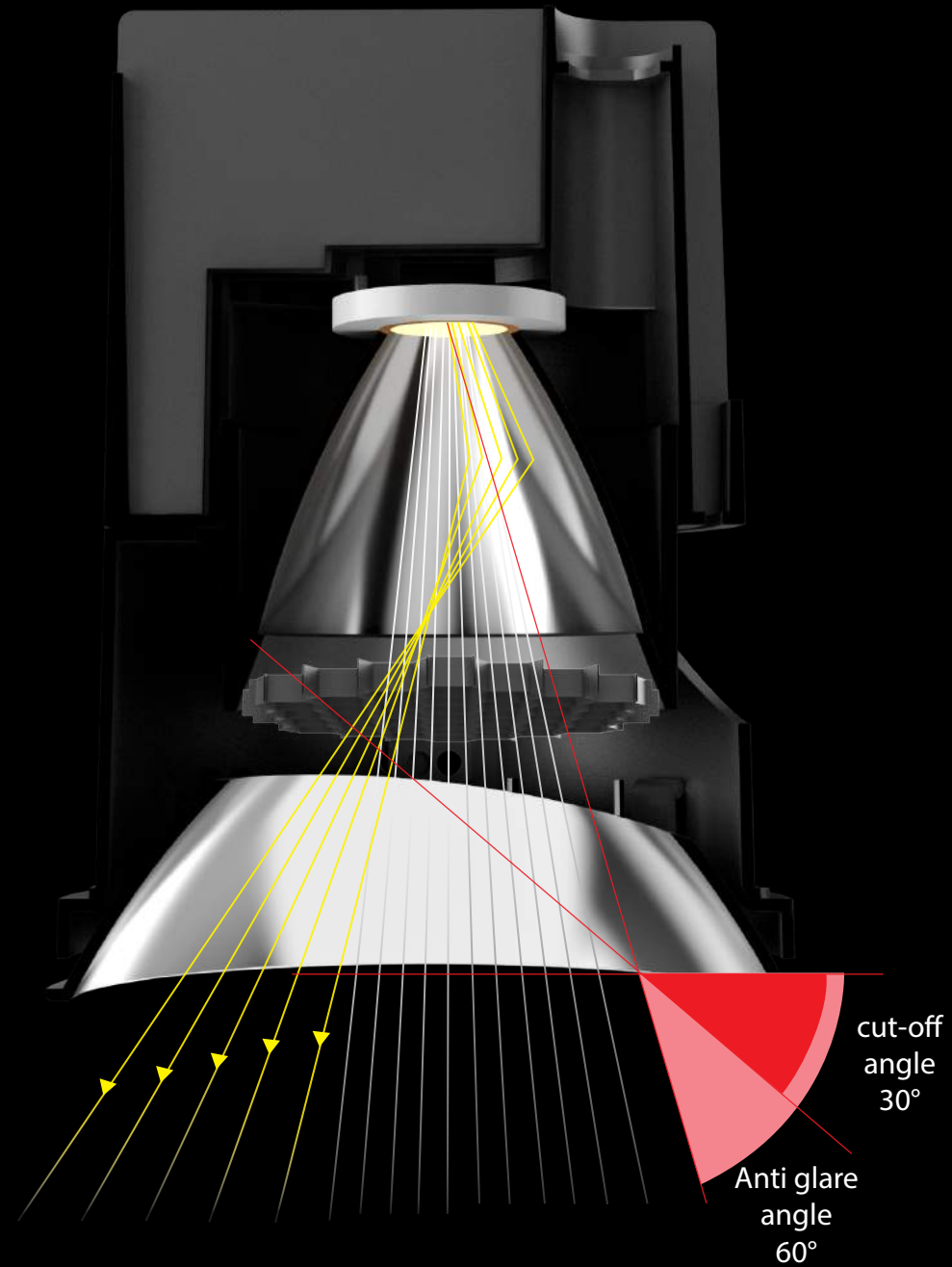
It embodies its originality everywhere.



Comfortable

Get rid of all the triviality, simplicity and simplicity



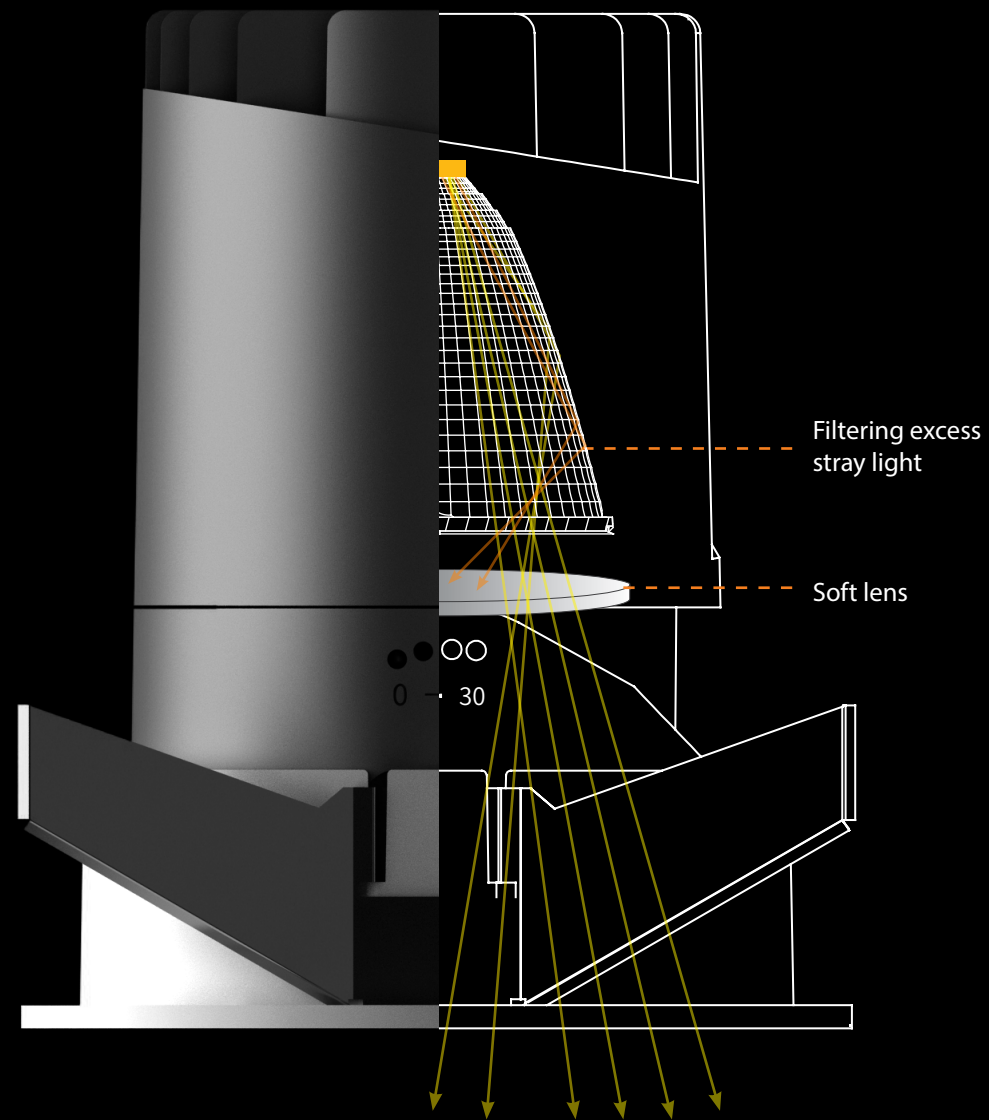


## Dark light technology

Deep reflection cup, UGR < 16,

Strengthen the Distance between Light Source and Outlet and Improve the Anti-glare Performance

Light is filtered through reflecting cup and anti-glare honeycomb to effectively reduce excess beam.



## Antiglare fittings

Choose and match light effect fittings to create a soft atmosphere.

Light source is divided into small beams, Filter stray light, make light soft and not dazzling.

Different lenses can create different lighting effects.



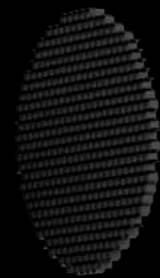
Frosted filter



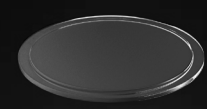
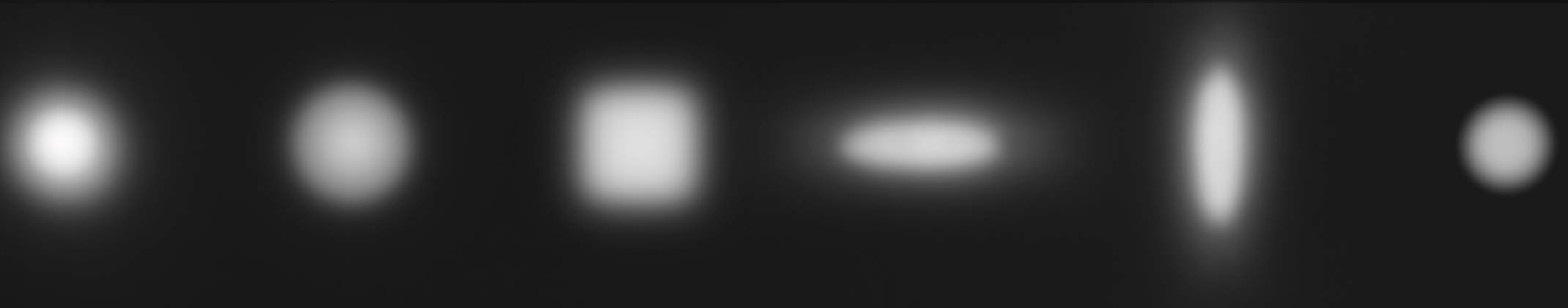
Fringe filter



Rhombic filter

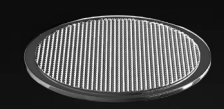


Honey comb



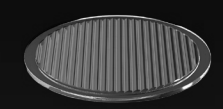
Clear lens

Ordinary 24 degrees



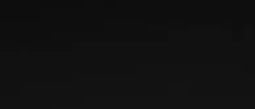
Frosted filter

Ground glass filters out soft light and further enhances the diffuse effect of light, thus reducing the possibility of glare and providing a uniform and soft light environment.



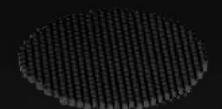
Rhombic filter

Square spot, through atomization or diffusion, make light evenly diffuse more soft, thereby reducing the stimulation of lamps to the human eye, achieving anti-glare effect, and generally both have optical beam expanding effect.



Fringe filter

The stretching stripe spot can be stretched horizontally or linearly according to the direction, and the function is to stretch the circular spot into elliptical spot. It can concentrate the spot in one direction, illuminate the widest possible area in that direction, and reduce the waste of light in other directions (mainly in the direction of ellipse short axis).



Honey comb

Excessive soft edge light source effect, effectively prevent excessive astigmatism, let direct light through, thereby preventing glare, eye protection, anti-glare UGR less than 16.



## Soft light

Ultra-high color rendering, so that objects show the original color,

Soft light and shadow, overflowing color,

Deduce the Real Light Effect Environment.



5W  
≤ 3m

12W  
≤ 5m

20W  
≤ 8m

35W  
≤ 10m

## Anti dazzle soft light

The series covers 5W / 12W / 20W / 35W,

Suitable for layer height of 3m~10m.

Adjustable



Elliptical hole



## Precise control of light

Four kinds of facial rings can be selected to create different  
facula atmosphere and outstanding light shape.  
Optional oblique/direct/elliptical/small round holes.

circular hole



Straight





2700K



3000K



3500K



4000K



5000K



6000K

## Color temperature

Various color temperatures can be selected to match six different light source brands.

CITIZEN  LUMINUS  CREE

PHILIPS  HONOURTEK  bridgelux



## Circular / Square / brimless

According to the lighting effect and facial rings, various styles and light effects can be selected.

Each kind of facial ring has its unique light effect.





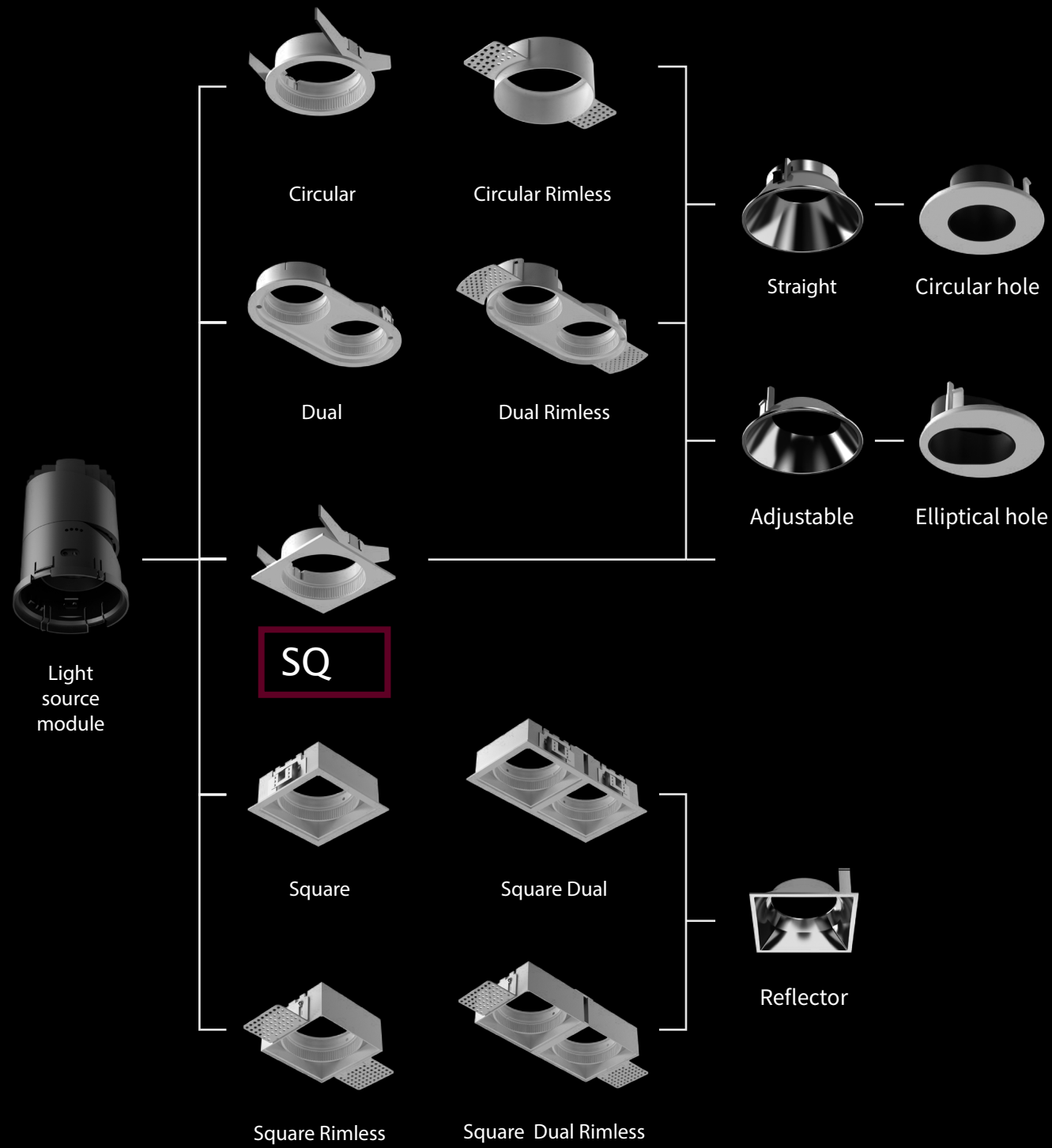
## Beauty, more than one

Reflector cover 6 colors are optional to meet the needs of different occasions

Reflector cover is precisely designed, electroplated and nano-sprayed.

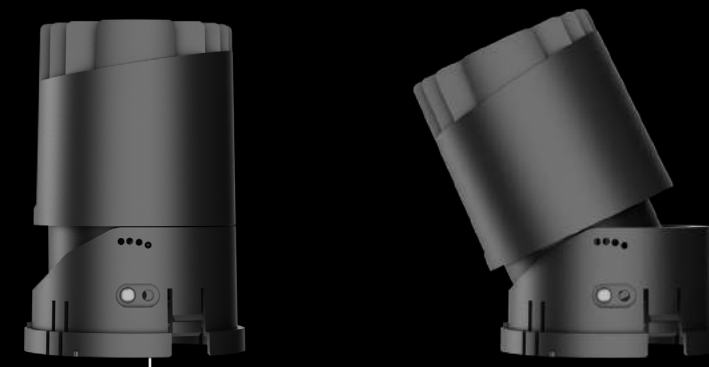
Comfortable Light Type with High Reflective Efficiency and High Efficiency.





## Modularization

Independently designed product appearance,  
Buckle modular structure, easy installation and maintenance.





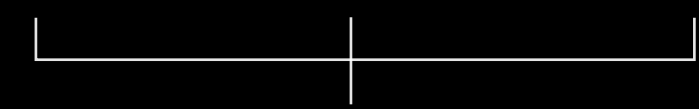
10W module



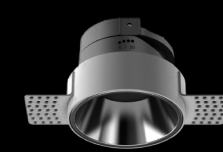
15W module



MR16 light source



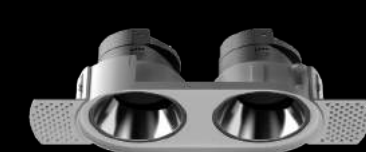
MR16 Circular Ring



MR16 Circular Rimless Ring



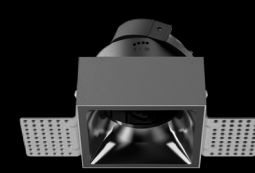
MR16 Dual Ring



MR16 Dual Rimless Ring



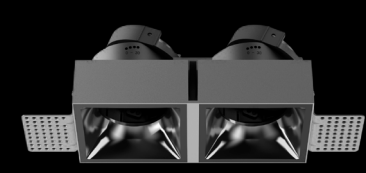
MR16 Square Ring



MR16 Square Rimless Ring



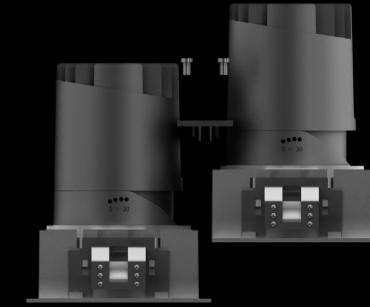
MR16 Square Dual Ring



MR16 Square Dual Rimless Ring

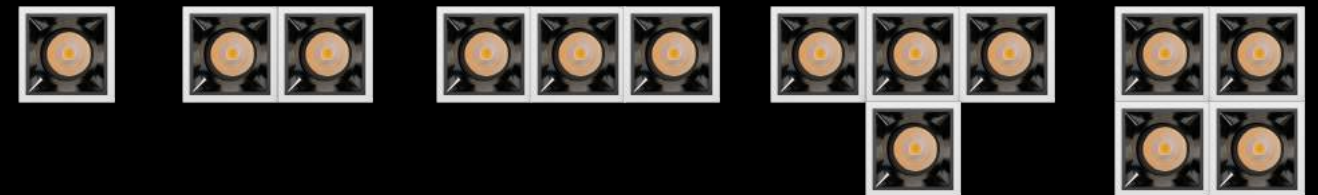
## Matching MR16 Light Source

It can be matched with different light source modules, and the combination is changeable.

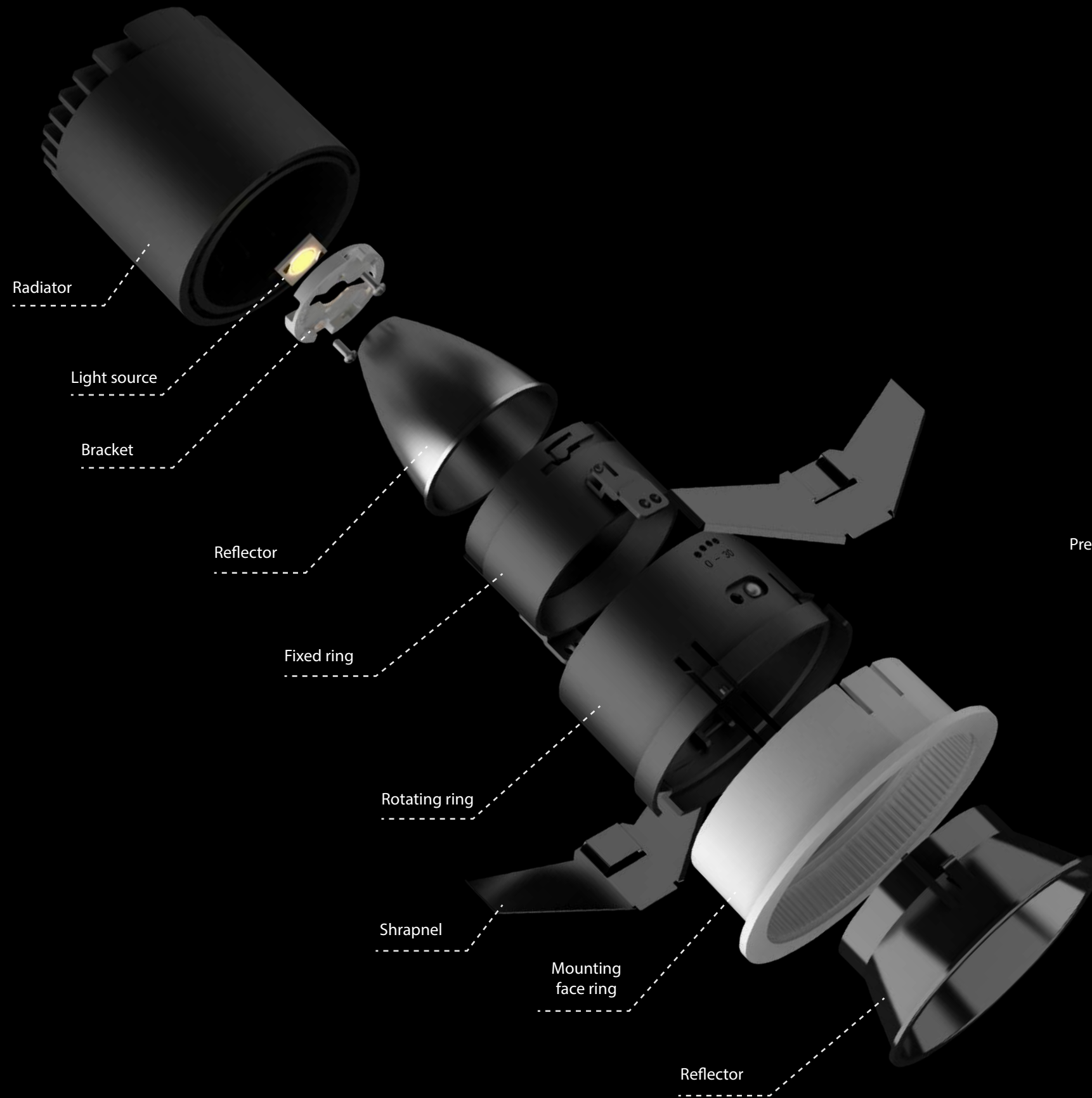


## Free stitching

Free splicing like Russian cubes provides enough illumination for high-rise space,  
and square boxes provide flexible lighting modes.



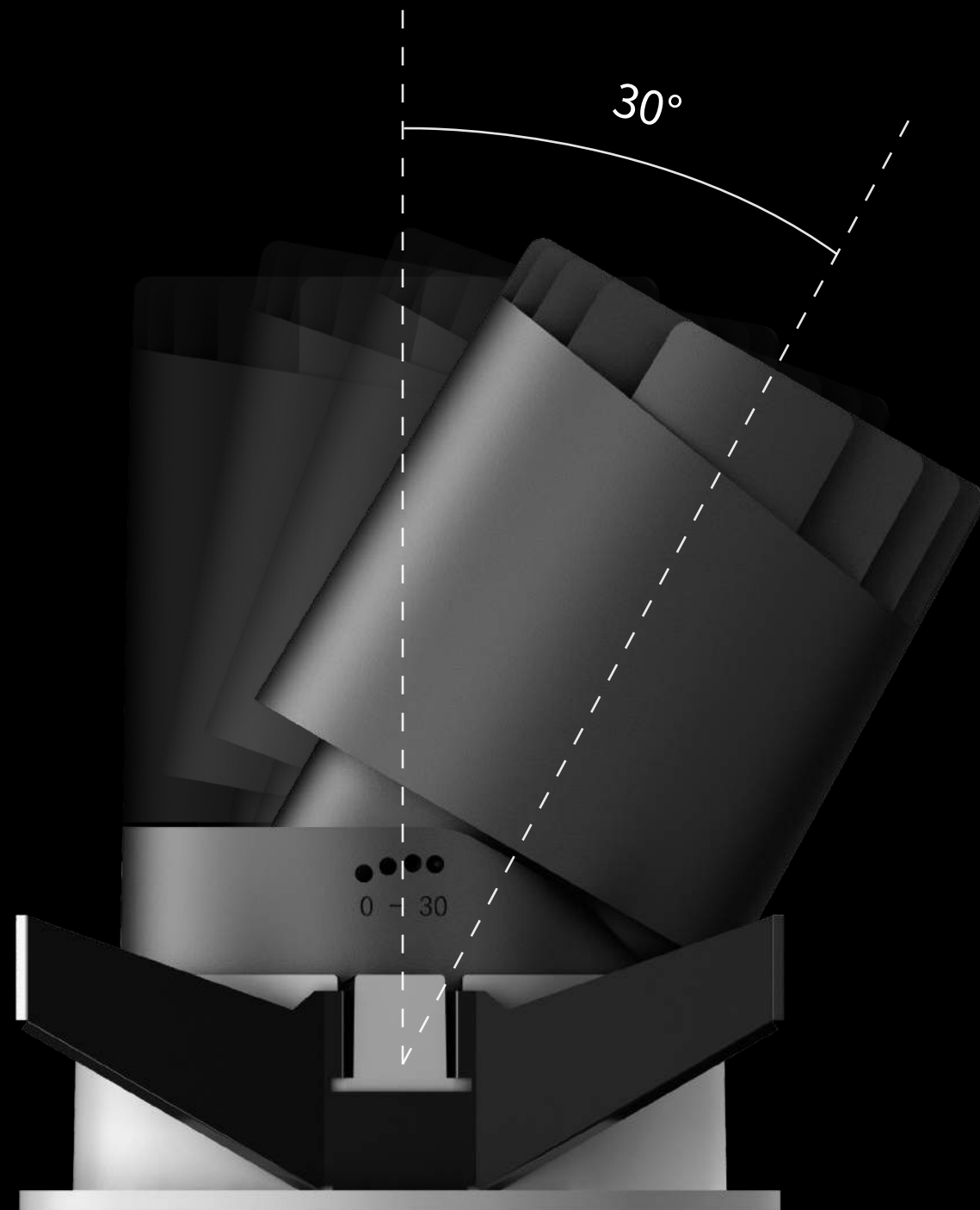




## Split structure

Pre-embedded design, quick installation and convenient maintenance of lamps and lanterns

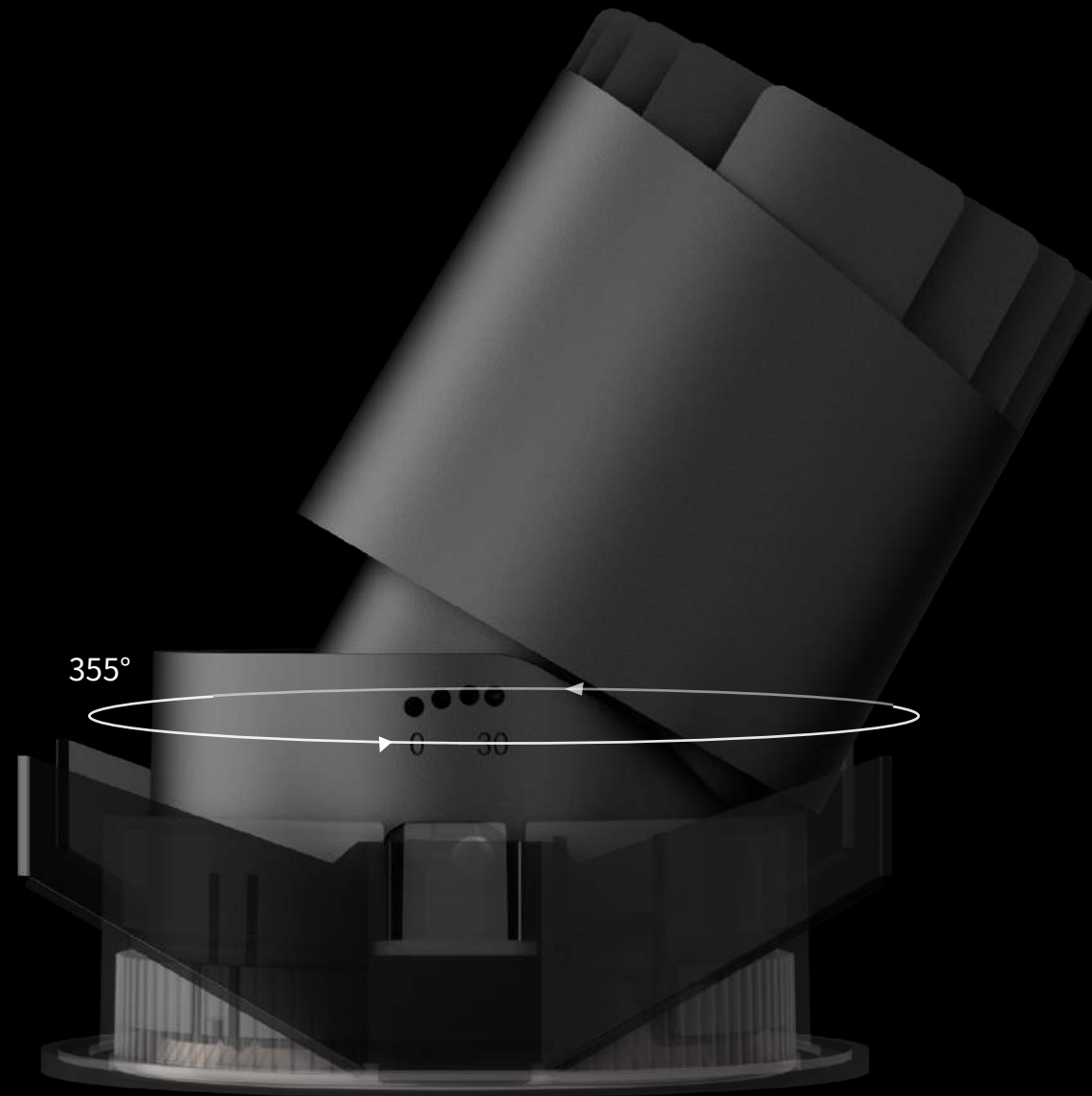
Innovation and High Efficiency Black Light Mirror.



## Scale mark

Increase the marking of rotation angle scale to make the maximum angle of lamp body tilt to 30 degrees.

Easy switching between direct illumination mode and wall wash mode.



## Locating groove

Rotate 355 degrees horizontally. Every rotation is just right.

Four-stop tilt angle adjustment, positioning circle inside, and no-stop are just right.

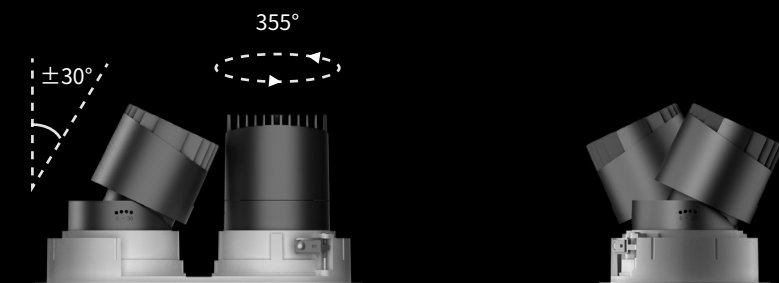
Accurate control of beam angle and spot effect and vivid emotion for space.



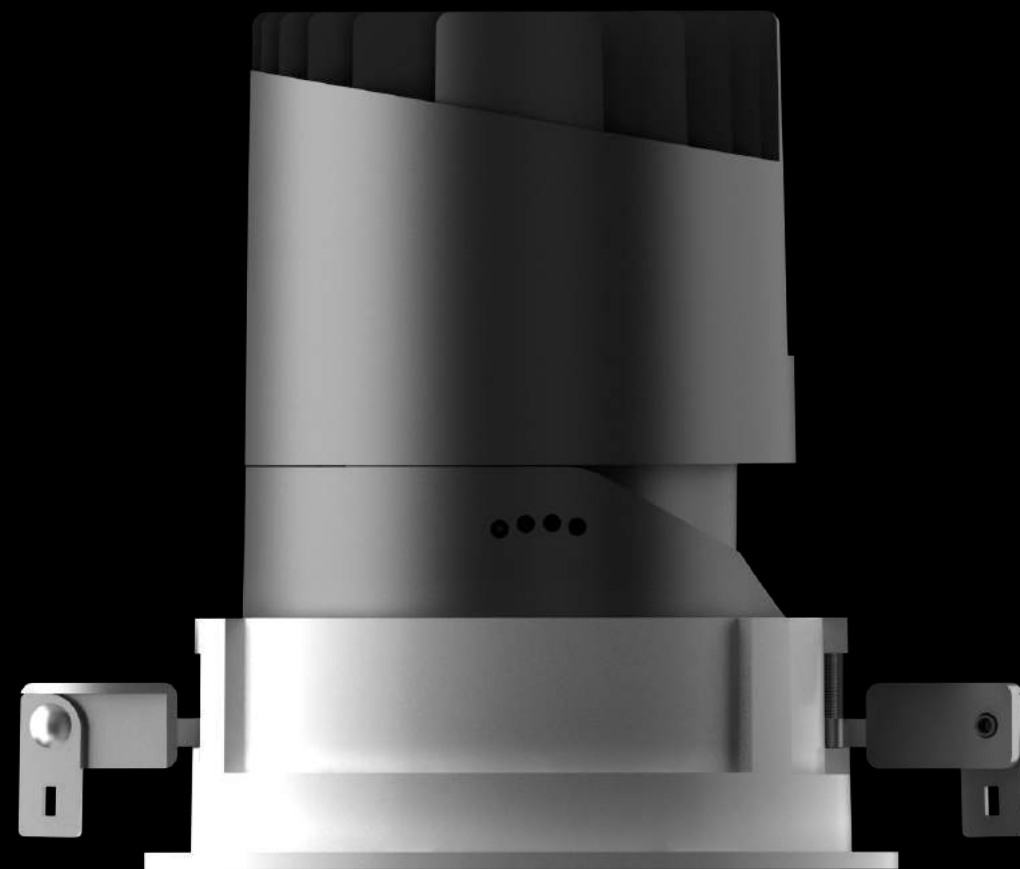
## Luminous efficiency

The lamp head can rotate freely in all directions from front to back.

Let light move at will and maximize the value of light efficiency.



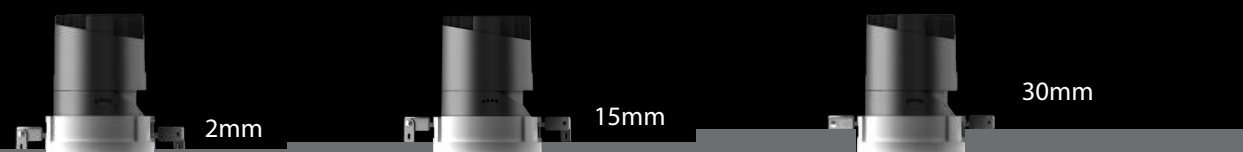




Suitable for a variety of plate thickness

Fast screw tightening, easy installation,

Suitable for all kinds of ceiling thickness, maximum up to 30mm

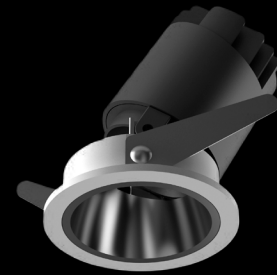


## Family Design

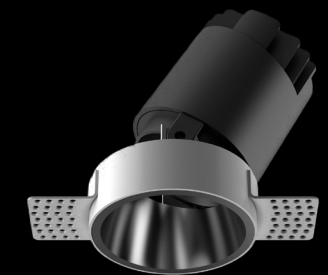
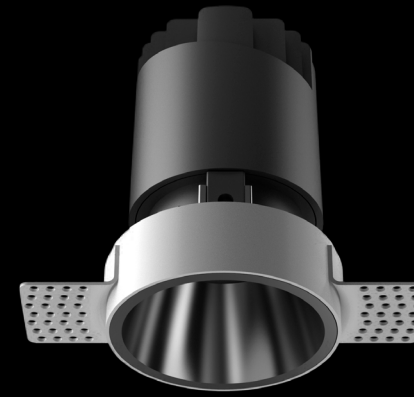
Full range of spotlights, different needs, different choices,  
Facial rings can be made in a variety of styles.



Power  
5W



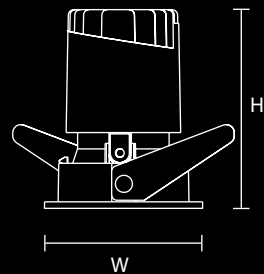
Adjustable



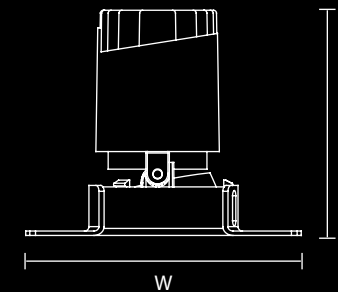
Rimless Adjustable

Model: XQ1003-5W Straight  
Power: 5W  
Beam angle: 10° / 24° / 38°  
CCT: 2700K / 3000K / 4000K  
Cutout: Ø50mm  
Size(WxH): Ø60x73mm

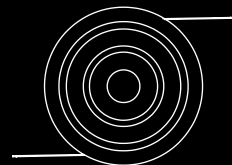
Model: XQ1003-5W Rimless Straight  
Power: 5W  
Beam angle: 10° / 24° / 38°  
CCT: 2700K / 3000K / 4000K  
Cutout: Ø50mm  
Size(WxH): Ø94x77mm



Circular hole



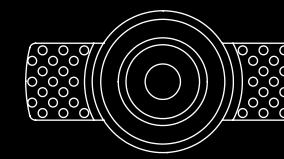
Rimless Circular hole



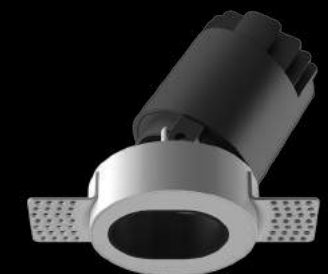
Ø50mm



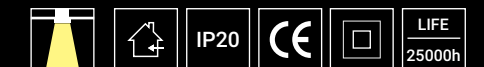
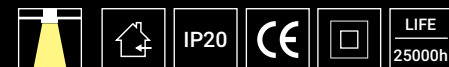
Elliptical hole



Ø50mm



Rimless Elliptical hole





Power  
5W



Adjustable

Model: XQ1003-5W Square Straight

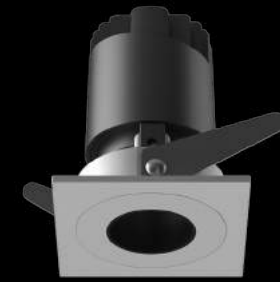
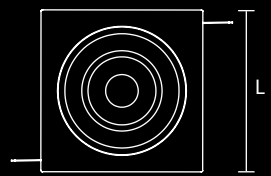
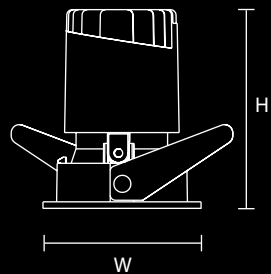
Power: 5W

Beam angle: 10° / 24° / 38°

CCT: 2700K / 3000K / 4000K

Cutout: Ø50mm

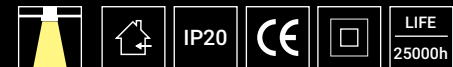
Size(WxLxH): 60x60x73mm



Circular hole



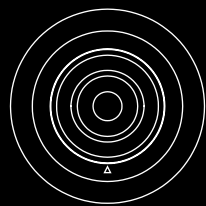
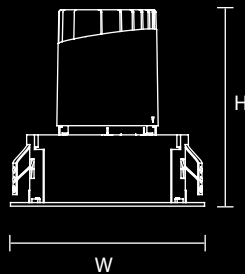
Elliptical hole



Power  
5W



Model: XQ1003-5WL Straight  
Power: 5W  
Beam angle: 10° / 24° / 38°  
CCT: 2700K / 3000K / 4000K  
Cutout: Ø70mm  
Size(WxH): Ø80x81mm



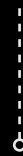
Ø70mm



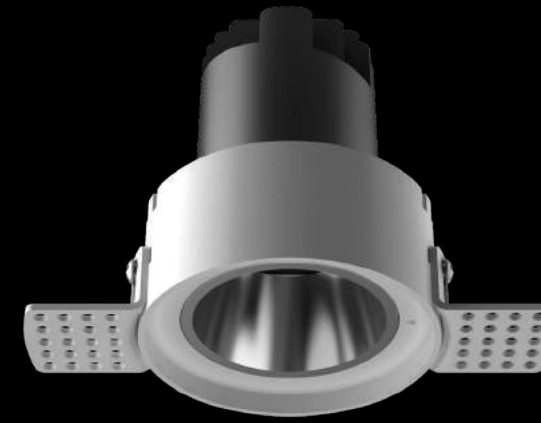
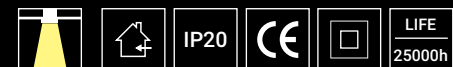
Adjustable



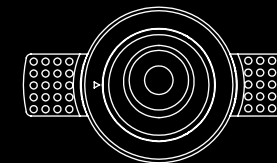
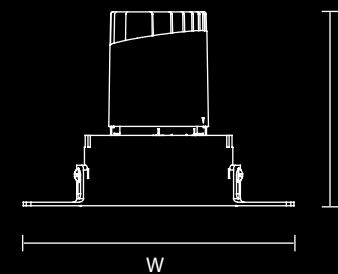
Circular hole



Elliptical hole



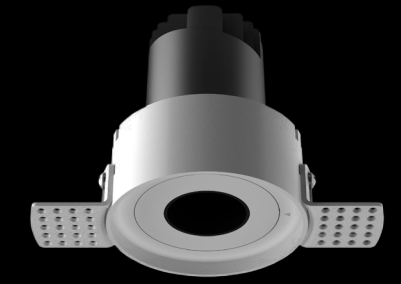
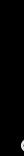
Model: XQ1003-5WL Rimless Straight  
Power: 5W  
Beam angle: 10° / 24° / 38°  
CCT: 2700K / 3000K / 4000K  
Cutout: Ø70mm  
Size(WxH): Ø114x81mm



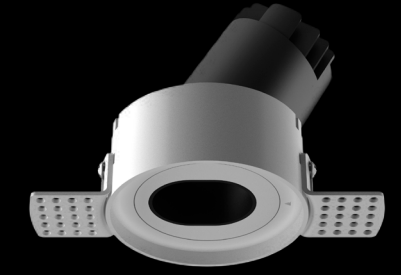
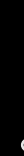
Ø70mm



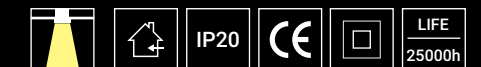
Rimless Adjustable



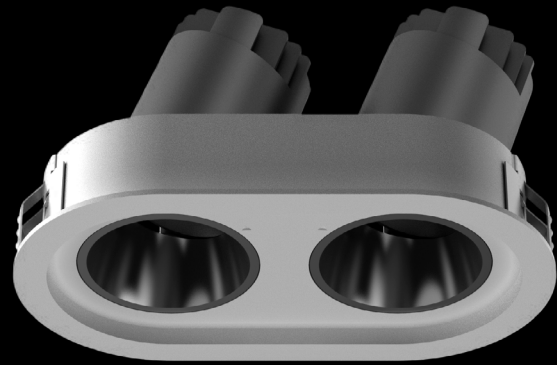
Rimless Circular hole



Rimless Elliptical hole







Model: XQ1003-5WL Dual Adjustable

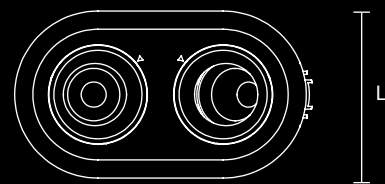
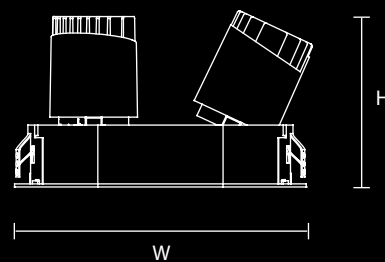
Power: 5Wx2

Beam angle: 10° / 24° / 38°

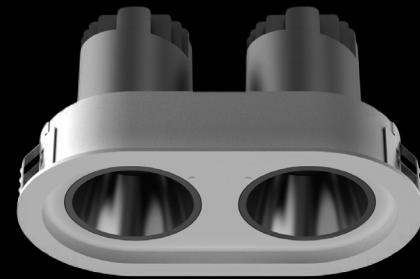
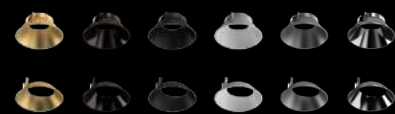
CCT: 2700K / 3000K / 4000K

Cutout: Ø130x68mm

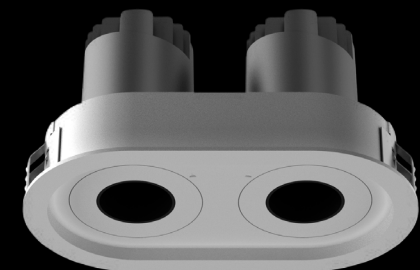
Size(WxLxH): Ø140x80x81mm



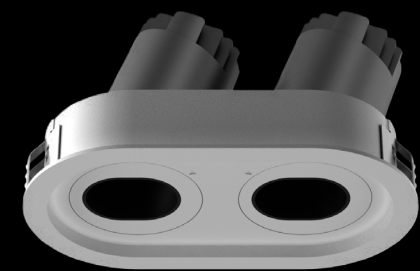
Ø130X68mm



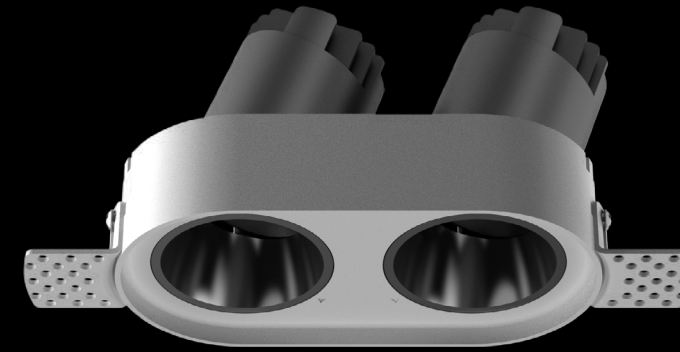
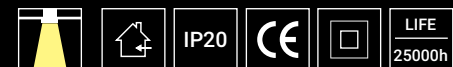
Dual Straight



Dual Circular hole



Dual Elliptical hole



Model: XQ1003-5WL Dual Rimless Adjustable

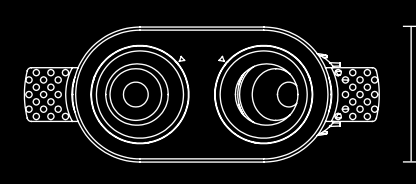
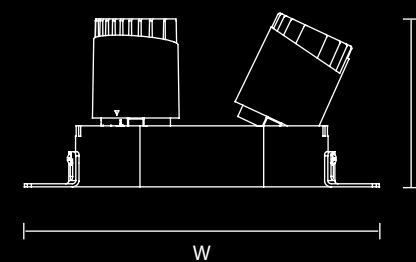
Power: 5Wx2

Beam angle: 10° / 24° / 38°

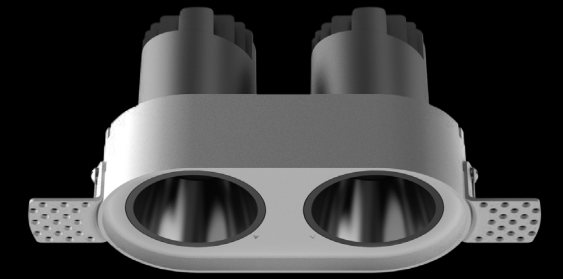
CCT: 2700K / 3000K / 4000K

Cutout: Ø127x68mm

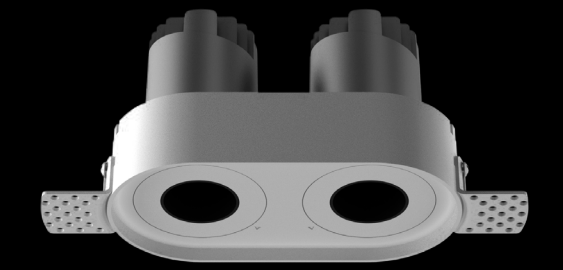
Size(WxLxH): Ø172x68x81mm



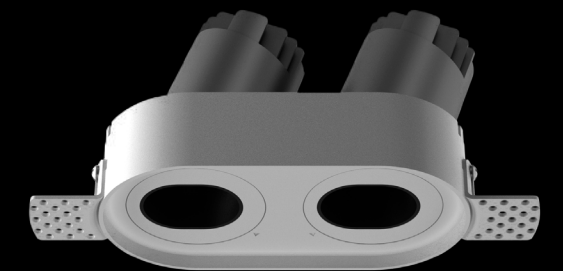
Ø127X68mm



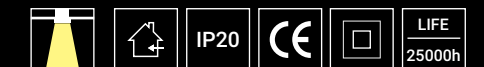
Dual Rimless Straight

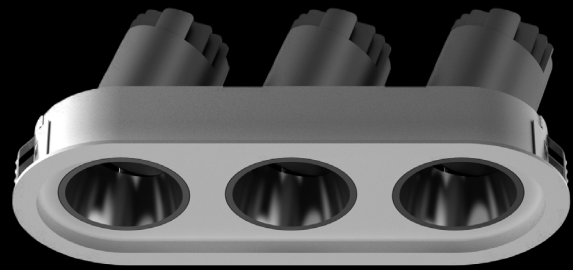


Dual Rimless Circular hole

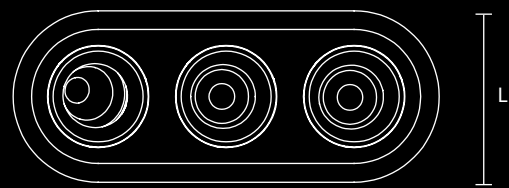
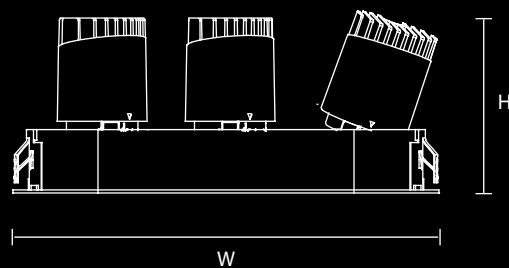


Dual Rimless Elliptical hole

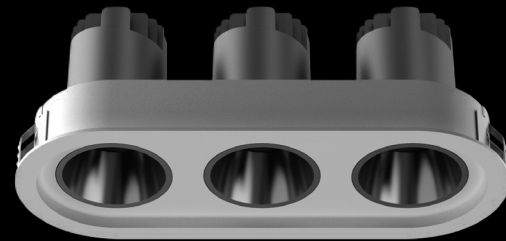




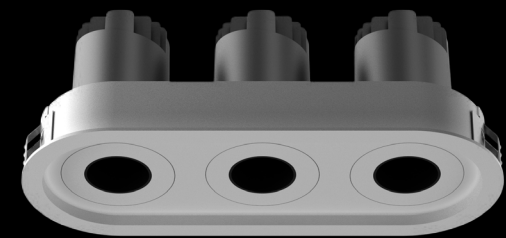
Model: XQ1003-5WL Three Adjustable  
 Power: 5Wx3  
 Beam angle: 10° / 24° / 38°  
 CCT: 2700K / 3000K / 4000K  
 Cutout: Ø190x68mm  
 Size(WxLxH): Ø200x80x81mm



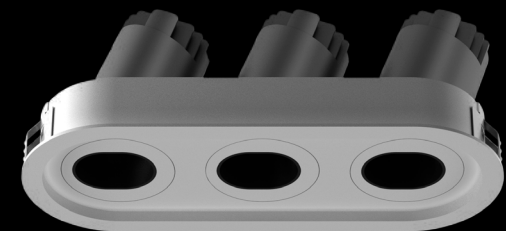
Ø190X68mm



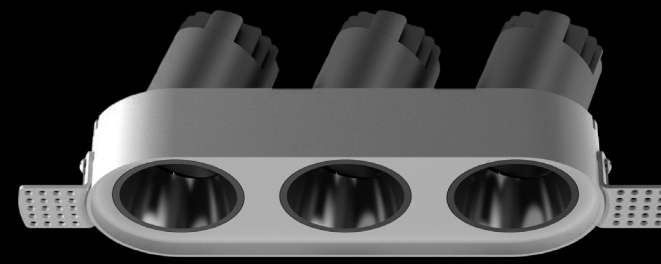
Three Straight



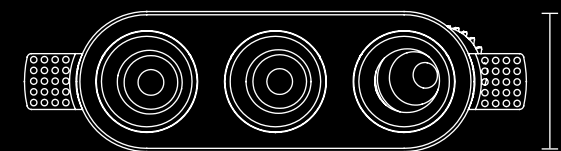
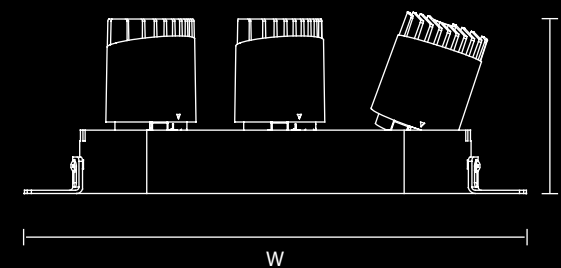
Three Circular hole



Three Elliptical hole



Model: XQ1003-5WL Three Rimless Adjustable  
 Power: 5Wx3  
 Beam angle: 10° / 24° / 38°  
 CCT: 2700K / 3000K / 4000K  
 Cutout: Ø188x68mm  
 Size(WxLxH): Ø234x68x81mm



Ø188X68mm



Power  
5W



Model: XQ1003-5W Four Adjustable

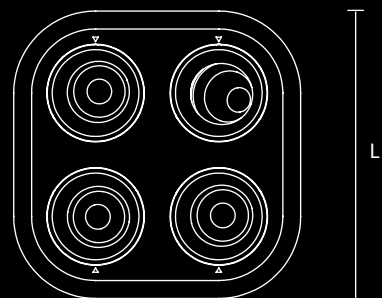
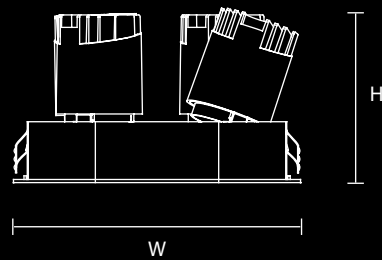
Power: 5Wx4

Beam angle: 10° / 24° / 38°

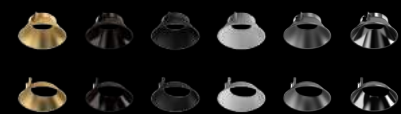
CCT: 2700K / 3000K / 4000K

Cutout: Ø130x130mm

Size(WxLxH): Ø140x140x81mm



Ø130X130mm



Four Straight



Four Circular hole



Four Elliptical hole



Model: XQ1003-5W Four Rimless Adjustable

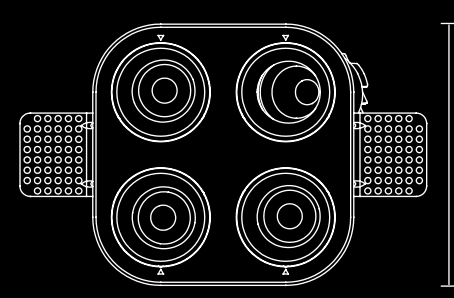
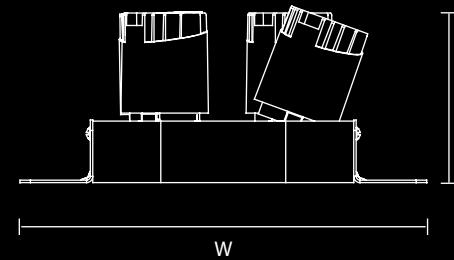
Power: 5Wx4

Beam angle: 10° / 24° / 38°

CCT: 2700K / 3000K / 4000K

Cutout: Ø128x128mm

Size(WxLxH): Ø195x125x81mm



Ø128X128mm



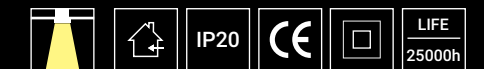
Four Rimless Straight



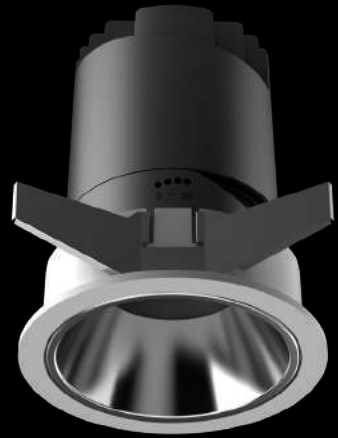
Four Rimless Circular hole



Four Rimless Elliptical hole



Power  
12W



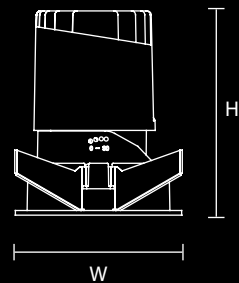
Adjustable



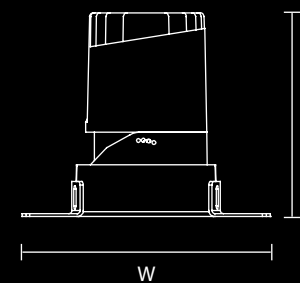
Rimless Adjustable

Model: XQ1003-12W Straight  
Power: 12W  
Beam angle: 15° / 24° / 38°  
CCT: 2700K / 3000K / 4000K  
Cutout: Ø75mm  
Size(WxH): Ø86x104mm

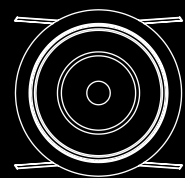
Model: XQ1003-12W Rimless Straight  
Power: 12W  
Beam angle: 15° / 24° / 38°  
CCT: 2700K / 3000K / 4000K  
Cutout: Ø75mm  
Size(WxH): Ø127x104mm



Circular hole



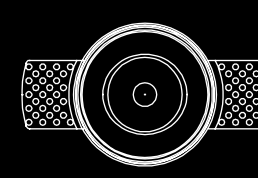
Rimless Circular hole



Ø75mm



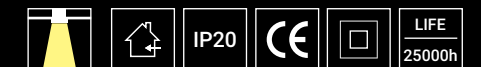
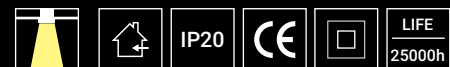
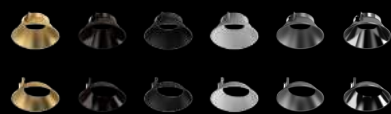
Elliptical hole



Ø75mm

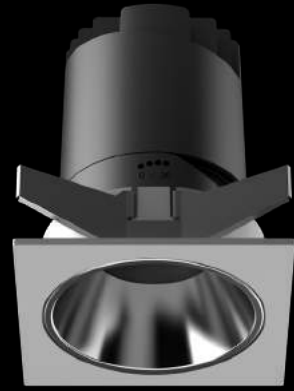


Rimless Elliptical hole





Power  
12W



Adjustable

Model: XQ1003-12W Square Straight

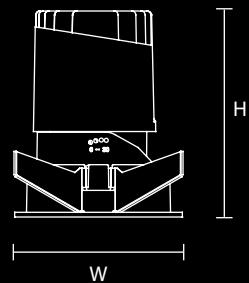
Power: 12W

Beam angle: 15° / 24° / 38°

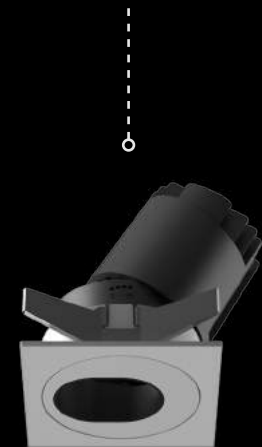
CCT: 2700K / 3000K / 4000K

Cutout: Ø75mm

Size(WxLxH): 86x86x104mm



Circular hole

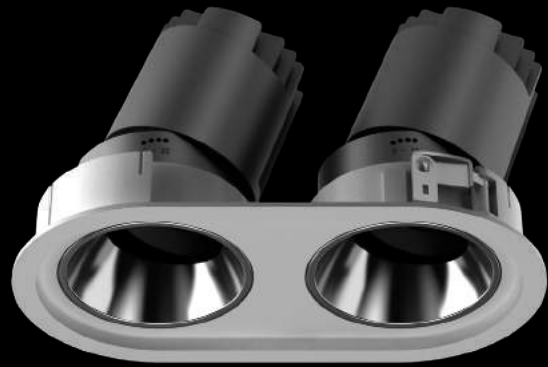


Elliptical hole

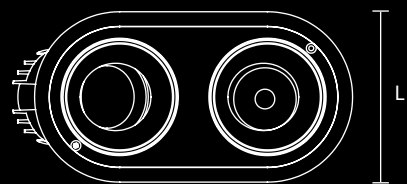
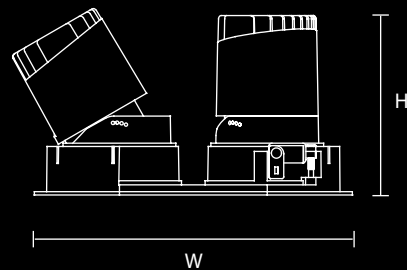




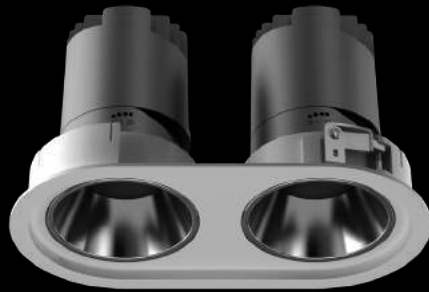
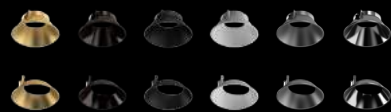
Power  
12W



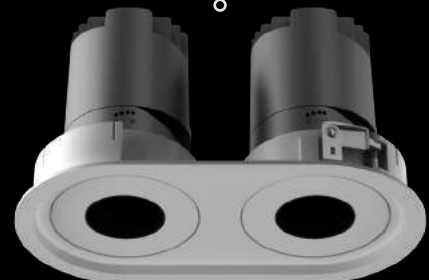
Model: XQ1003-12W Dual Adjustable  
 Power: 12Wx2  
 Beam angle: 15° / 24° / 38°  
 CCT: 2700K / 3000K / 4000K  
 Cutout: Ø182x92mm  
 Size(WxLxH): Ø194x104x109mm



Ø182X92mm



Dual Straight



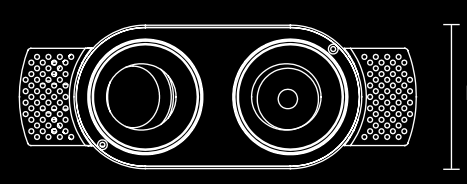
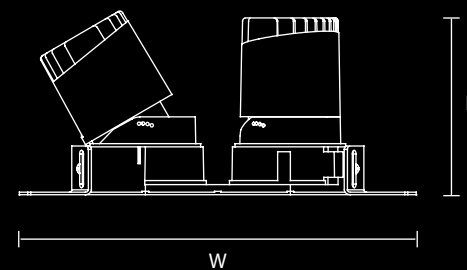
Dual Circular hole



Dual Elliptical hole



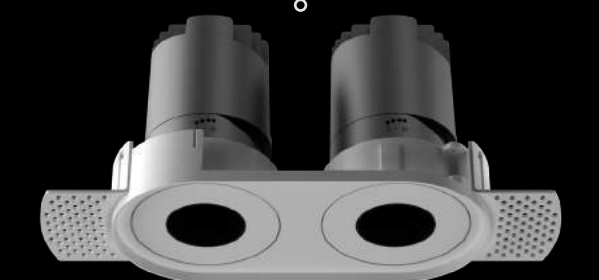
Model: XQ1003-12W Dual Rimless Adjustable  
 Power: 12Wx2  
 Beam angle: 15° / 24° / 38°  
 CCT: 2700K / 3000K / 4000K  
 Cutout: Ø182x92mm  
 Size(WxLxH): Ø246x89x109mm



Ø182X92mm



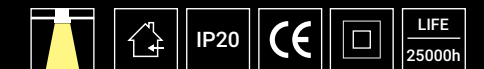
Dual Rimless Straight



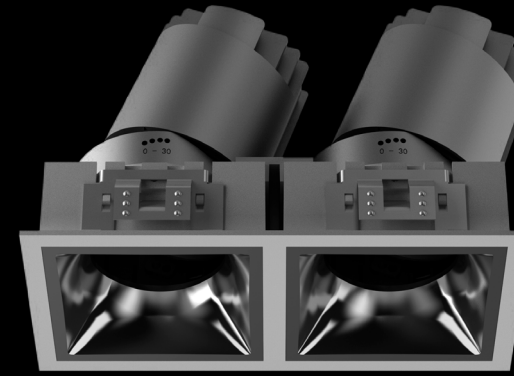
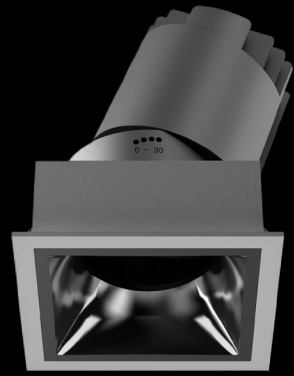
Dual Rimless Circular hole



Dual Rimless Elliptical hole



Power  
12W



Model: XQ1003-12W Square Adjustable

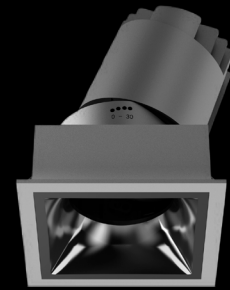
Power: 12W

Beam angle: 15° / 24° / 38°

CCT: 2700K / 3000K / 4000K

Cutout: 82x82mm

Size(WxLxH): 89x89x119mm



Square

Model: XQ1003-12W Square Dual Adjustable

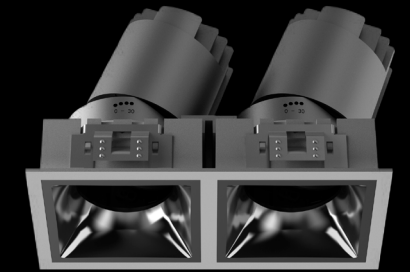
Power: 12Wx2

Beam angle: 15° / 24° / 38°

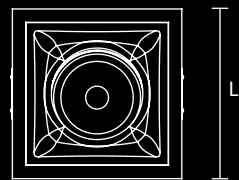
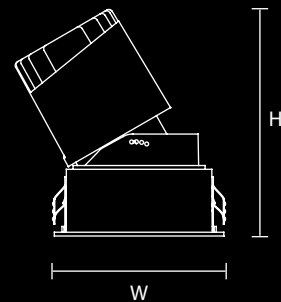
CCT: 2700K / 3000K / 4000K

Cutout: 163x82mm

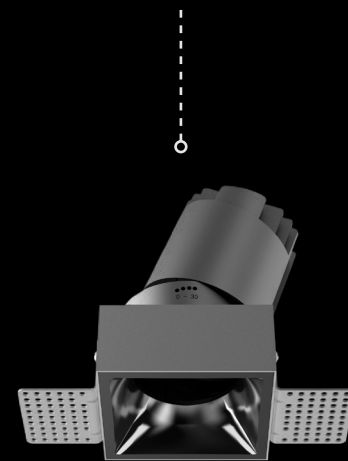
Size(WxLxH): 172x89x121mm



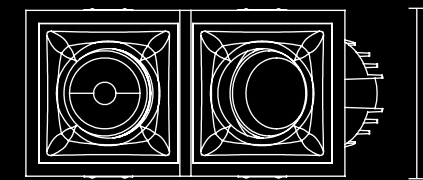
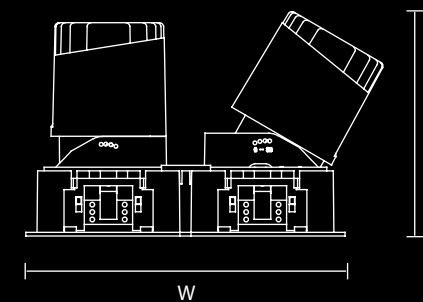
Square Dual



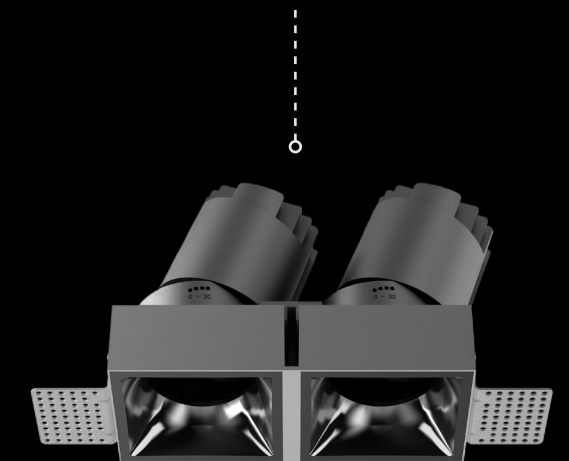
82x82mm



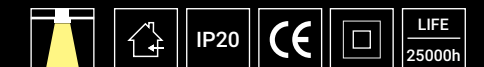
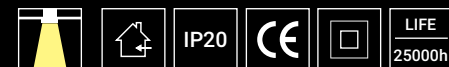
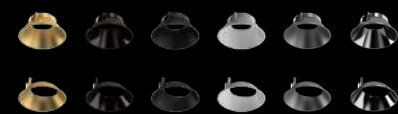
Square Rimless



163x82mm



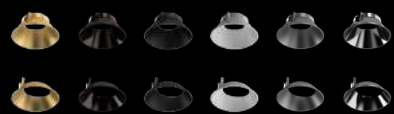
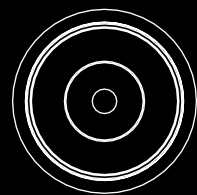
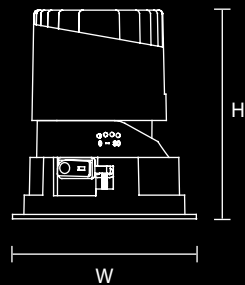
Square Dual Rimless



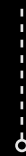
Power  
20W



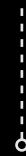
Model: XQ1003-20W Straight  
Power: 20W  
Beam angle: 15° / 24° / 38°  
CCT: 2700K / 3000K / 4000K  
Cutout: Ø95mm  
Size(WxH): Ø105x119mm



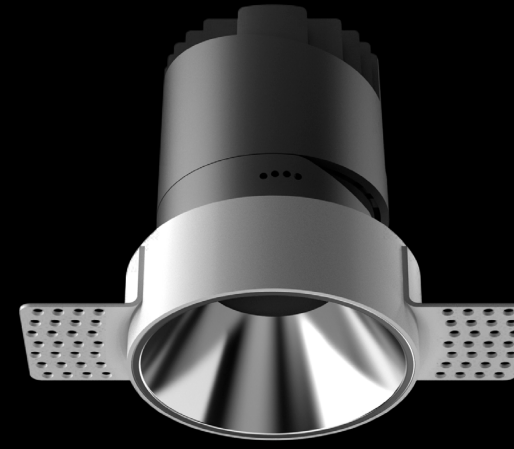
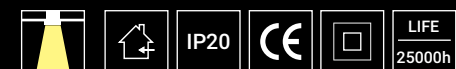
Adjustable



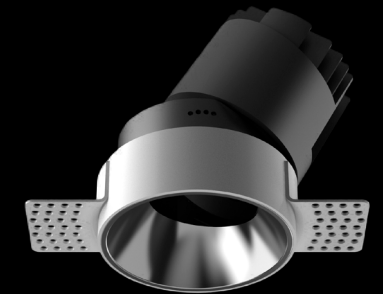
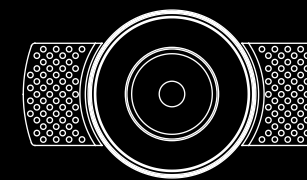
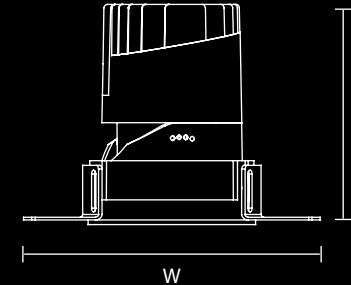
Circular hole



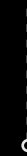
Elliptical hole



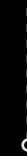
Model: XQ1003-20W Rimless Straight  
Power: 20W  
Beam angle: 15° / 24° / 38°  
CCT: 2700K / 3000K / 4000K  
Cutout: Ø95mm  
Size(WxH): Ø163x118mm



Rimless Adjustable



Rimless Circular hole

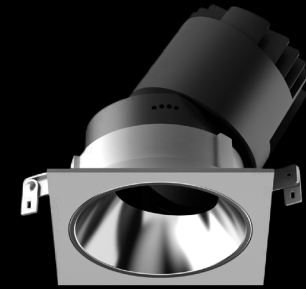


Rimless Elliptical hole





Power  
20W



Adjustable

Model: XQ1003-20W Square Straight

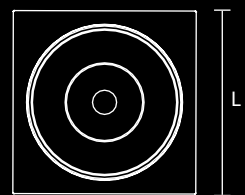
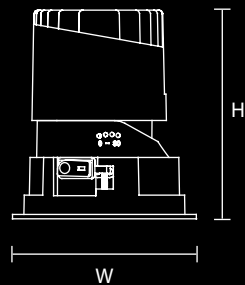
Power: 20W

Beam angle: 15° / 24° / 38°

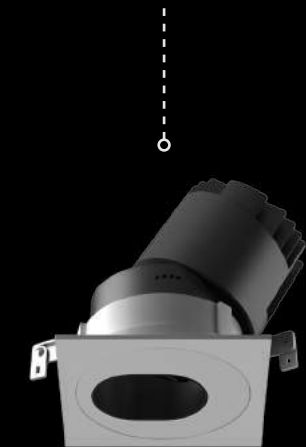
CCT: 2700K / 3000K / 4000K

Cutout: Ø95mm

Size(WxLxH): 106x106x119mm



Circular hole



Elliptical hole





Model: XQ1003-20W Dual Adjustable

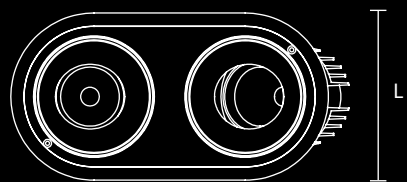
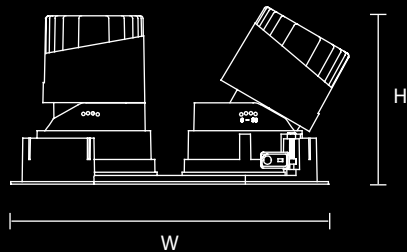
Power: 20Wx2

Beam angle: 15° / 24° / 38°

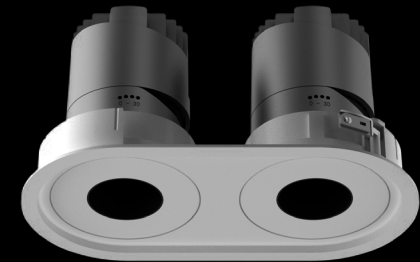
CCT: 2700K / 3000K / 4000K

Cutout: Ø226x113mm

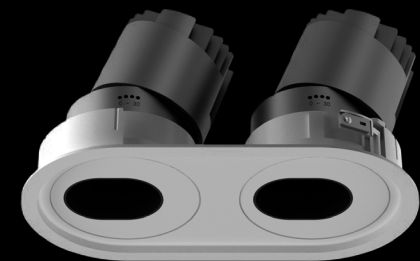
Size(WxH): Ø240x126x126mm



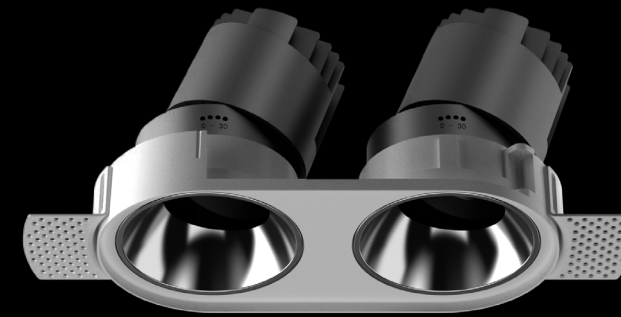
Dual Straight



Dual Circular hole



Dual Elliptical hole



Model: XQ1003-20W Dual Rimless Adjustable

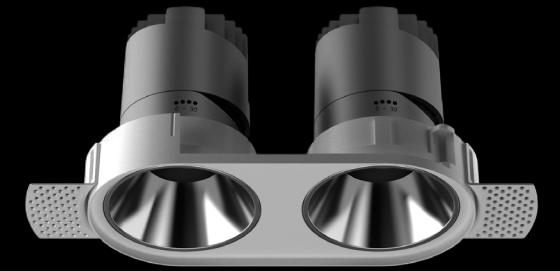
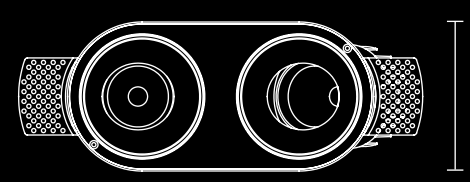
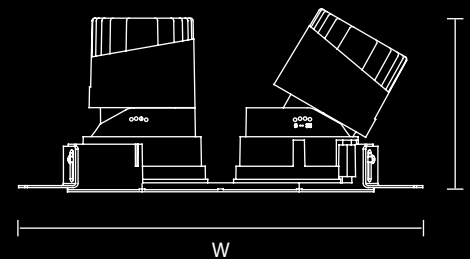
Power: 20Wx2

Beam angle: 15° / 24° / 38°

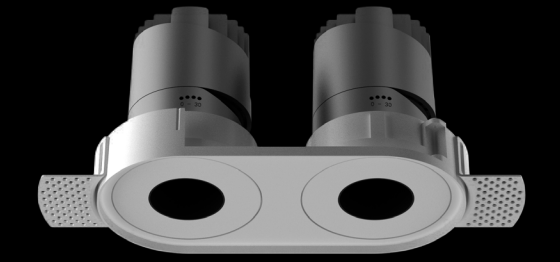
CCT: 2700K / 3000K / 4000K

Cutout: Ø226x113mm

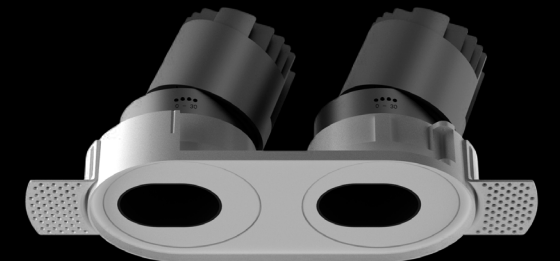
Size(WxH): Ø293x108x126mm



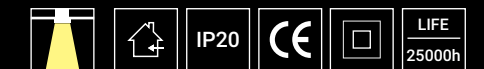
Dual Rimless Straight



Dual Rimless Circular hole



Dual Rimless Elliptical hole





Power  
35W



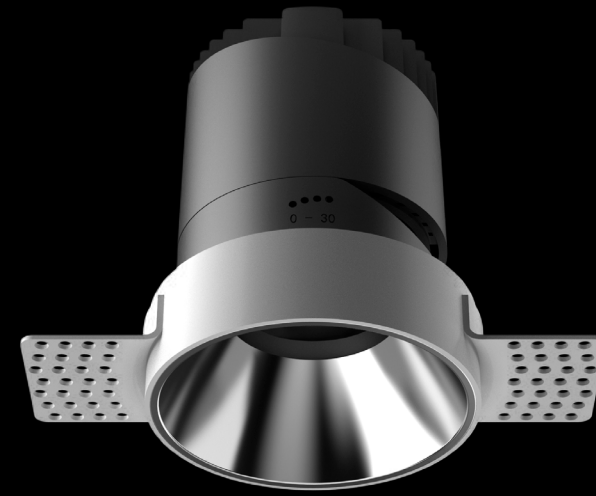
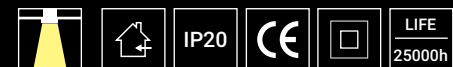
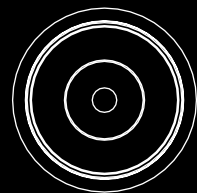
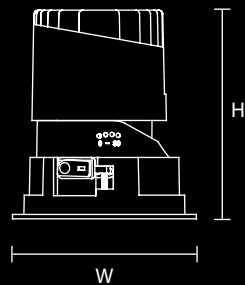
Model: XQ1003-35W Straight  
 Power: 35W  
 Beam angle: 15° / 24° / 38°  
 CCT: 2700K / 3000K / 4000K  
 Cutout: Ø120mm  
 Size(WxH): Ø133x145mm



Straight



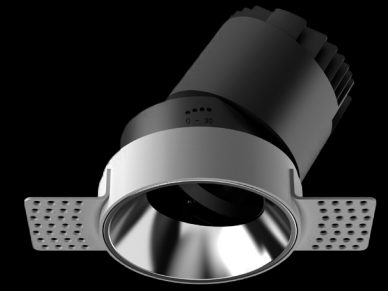
Adjustable



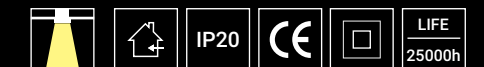
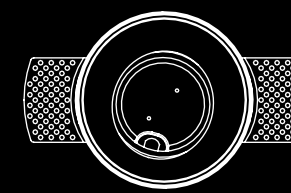
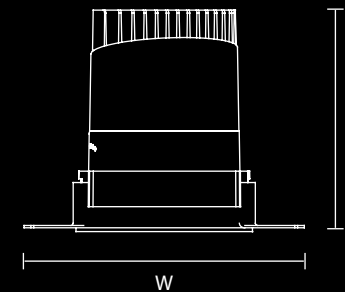
Model: XQ1003-35W Rimless Straight  
 Power: 35W  
 Beam angle: 15° / 24° / 38°  
 CCT: 2700K / 3000K / 4000K  
 Cutout: Ø120mm  
 Size(WxH): Ø186x147mm



Rimless Straight



Rimless Adjustable



Power  
35W



Model: XQ1003-35W Square Straight

Power: 35W

Beam angle: 15° / 24° / 38°

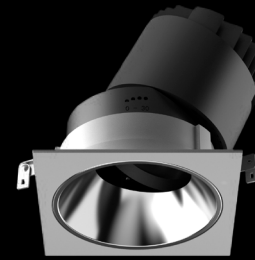
CCT: 2700K / 3000K / 4000K

Cutout: Ø120mm

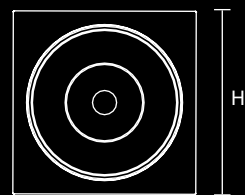
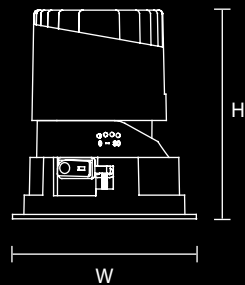
Size(WxLxH): 133x133x145mm



Straight



Adjustable





Power  
35W



Model: XQ1003-35W Dual Adjustable

Power: 35Wx2

Beam angle: 15° / 24° / 38°

CCT: 2700K / 3000K / 4000K

Cutout: Ø282x138mm

Size(WxH): Ø298x153x150mm

Model: XQ1003-35W Dual Rimless Adjustable

Power: 35Wx2

Beam angle: 15° / 24° / 38°

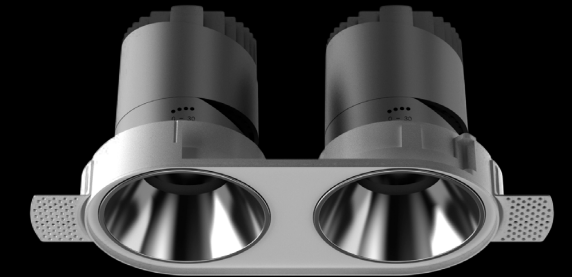
CCT: 2700K / 3000K / 4000K

Cutout: Ø282x136mm

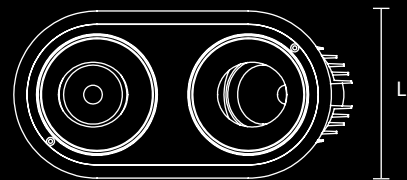
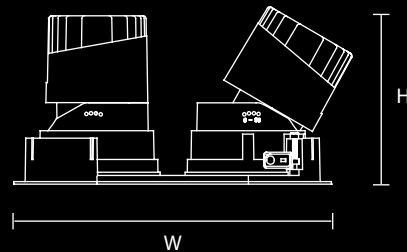
Size(WxH): Ø351x133x150mm



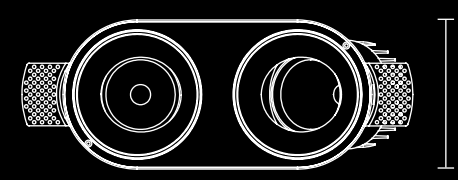
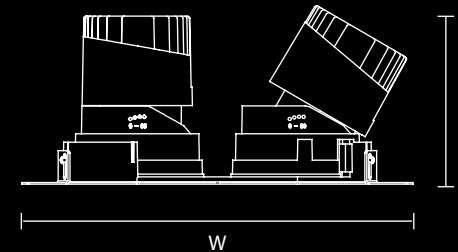
Dual Straight



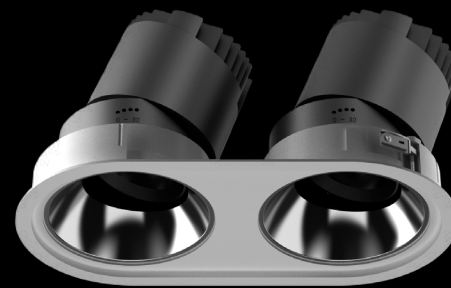
Dual Adjustable



Ø282x138mm



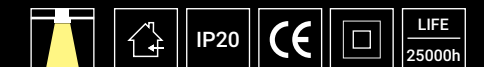
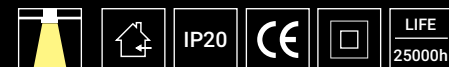
Ø282x136mm



Dual Adjustable



Dual Rimless Adjustable





MR16 Circular Ring



MR16 Circular Rimless Ring



Model: XQ1003 MR16 Square Module Ring

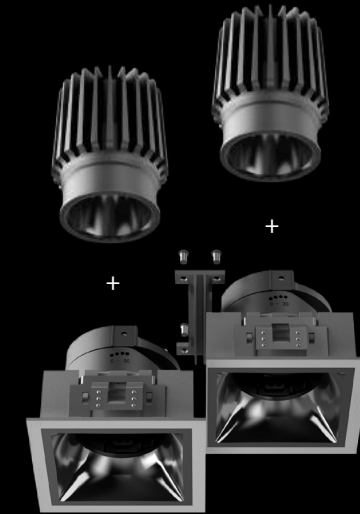
Power: 5W / 10W / 15W

Beam angle: 15° / 24° / 38°

CCT: 2700K / 3000K / 4000K

Cutout: 82x82mm

Size(WxLxH): 89x89x79mm



MR16 Square Dual Ring

Model: XQ1003 MR16 Module Ring

Power: 5W / 10W / 15W

Beam angle: 15° / 24° / 38°

CCT: 2700K / 3000K / 4000K

Cutout: Ø75mm

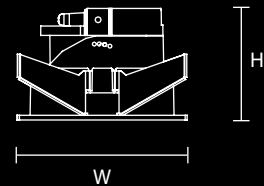
Size(WxLxH): Ø86x57mm



Adjustable



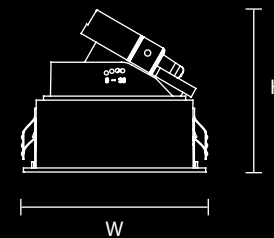
Rimless Adjustable



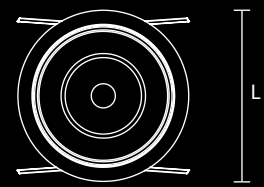
Circular hole



Rimless Circular hole



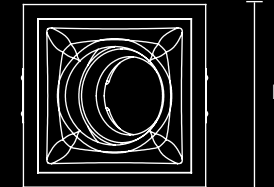
Single / Dual Ring



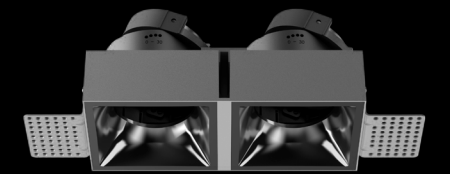
Elliptical hole



Rimless Elliptical hole

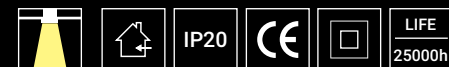
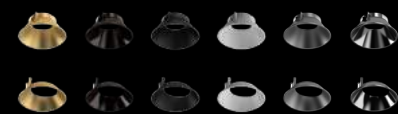


Single / Dual Rimless Ring



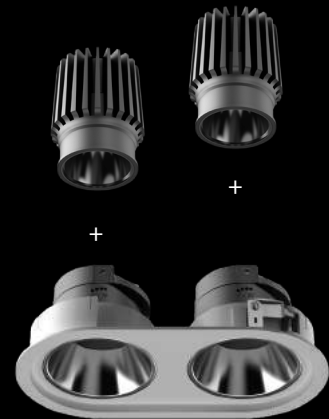
Ø75mm

82x82mm

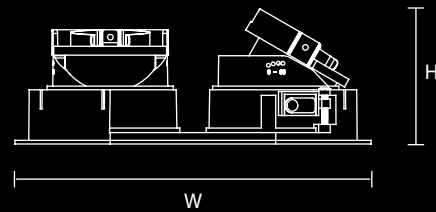




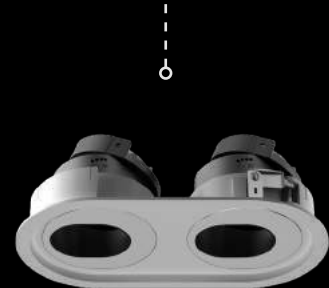
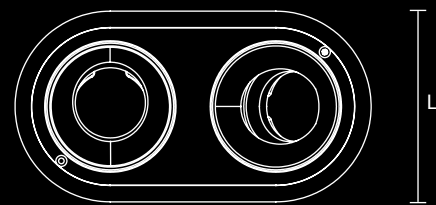
Model: XQ1003 MR16-2 Module Ring  
 Power: 5Wx2 / 10Wx2 / 15Wx2  
 Beam angle: 15° / 24° / 38°  
 CCT: 2700K / 3000K / 4000K  
 Cutout: Ø182x92mm  
 Size(WxLxH): Ø194x104x73mm



MR16 Dual Ring



Dual Circular hole

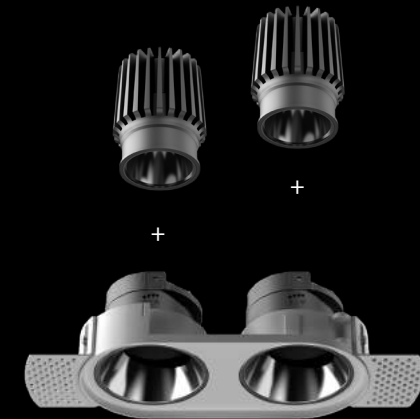


Dual Elliptical hole

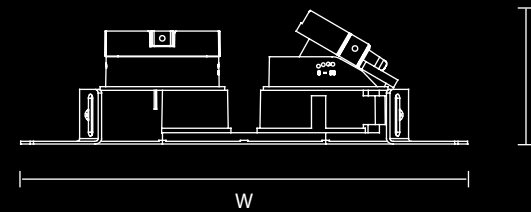
Φ182x92mm



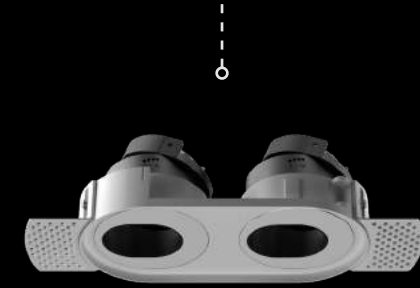
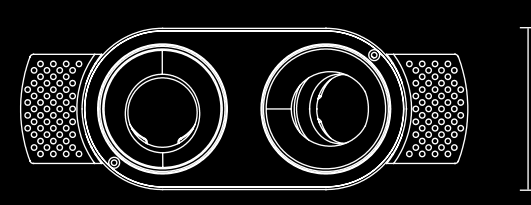
Model: XQ1003 MR16-2 Module Ring  
 Power: 5Wx2 / 10Wx2 / 15Wx2  
 Beam angle: 15° / 24° / 38°  
 CCT: 2700K / 3000K / 4000K  
 Cutout: Ø182x92mm  
 Size(WxLxH): Ø246x89x73mm



MR16 Dual Rimless Ring

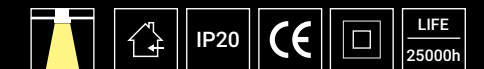


Dual Rimless Circular hole



Dual Rimless Elliptical hole

Φ182x92mm







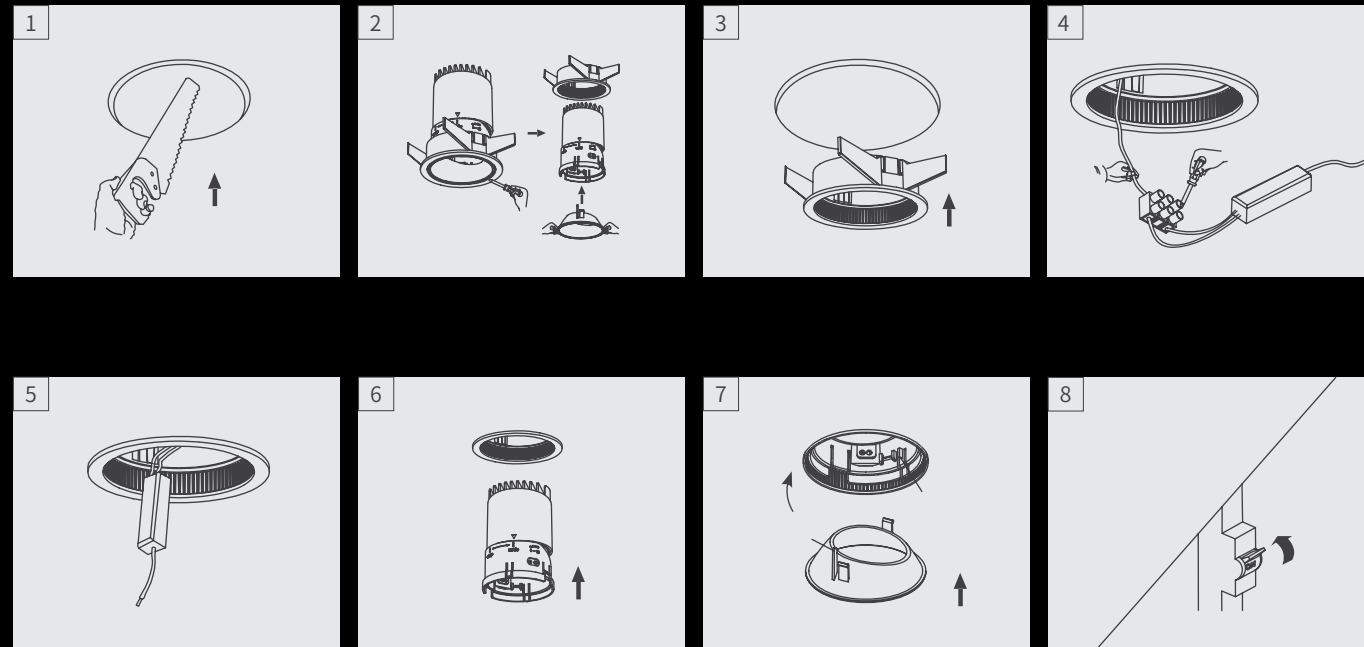
## Installation method

A variety of installation specifications to meet different space,

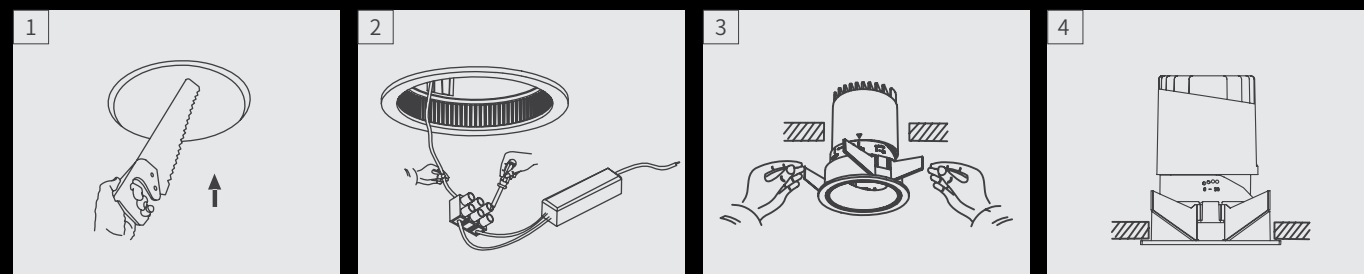
Different visual needs

# Installation method

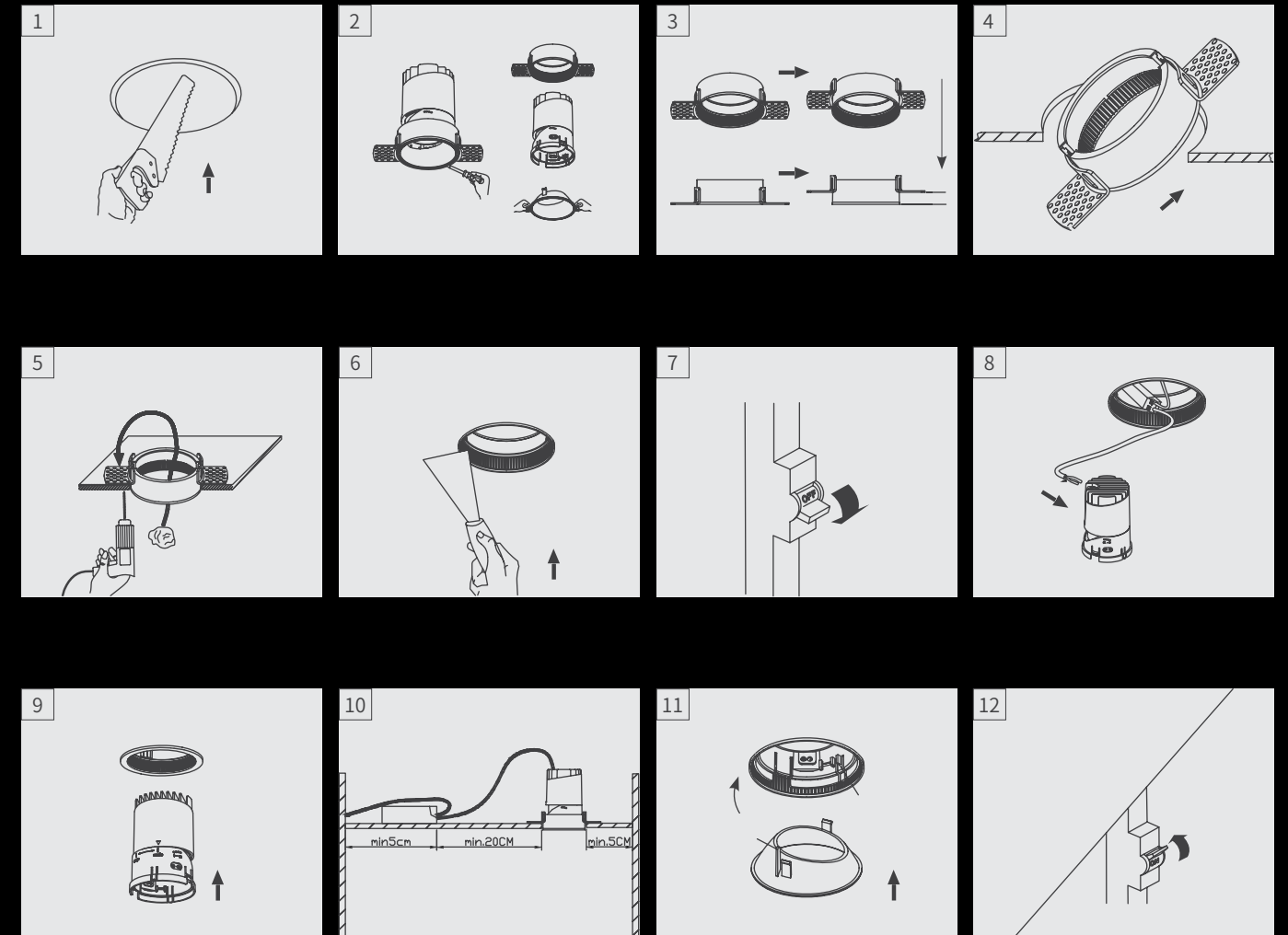
Installation method 1  
(suitable for opening size  $\Phi 50\text{mm}$ 、 $\Phi 75\text{mm}$ ):



Installation method 2  
(suitable for opening size  $\Phi 50\text{mm}$ 、 $\Phi 75\text{mm}$ ):

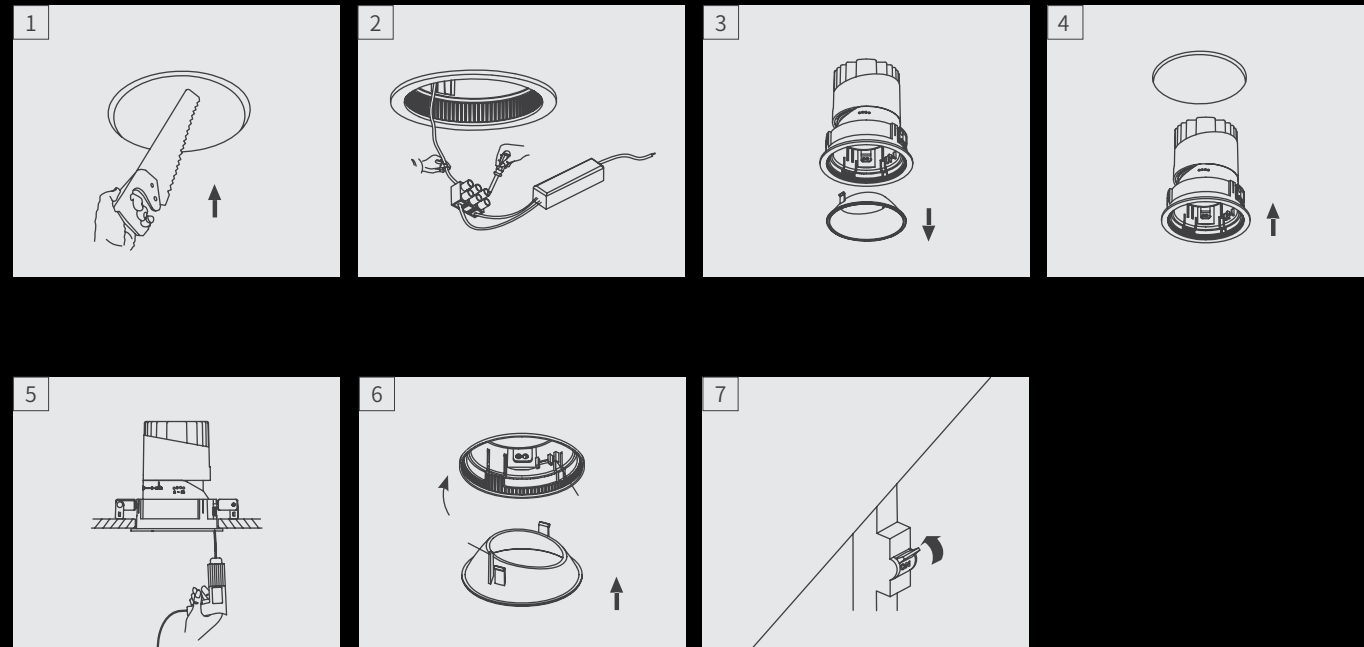


Installation method of brimless  
(suitable for opening size  $\Phi 50\text{mm}$ 、 $\Phi 75\text{mm}$ 、 $\Phi 95\text{mm}$ 、 $\Phi 120\text{mm}$ ):

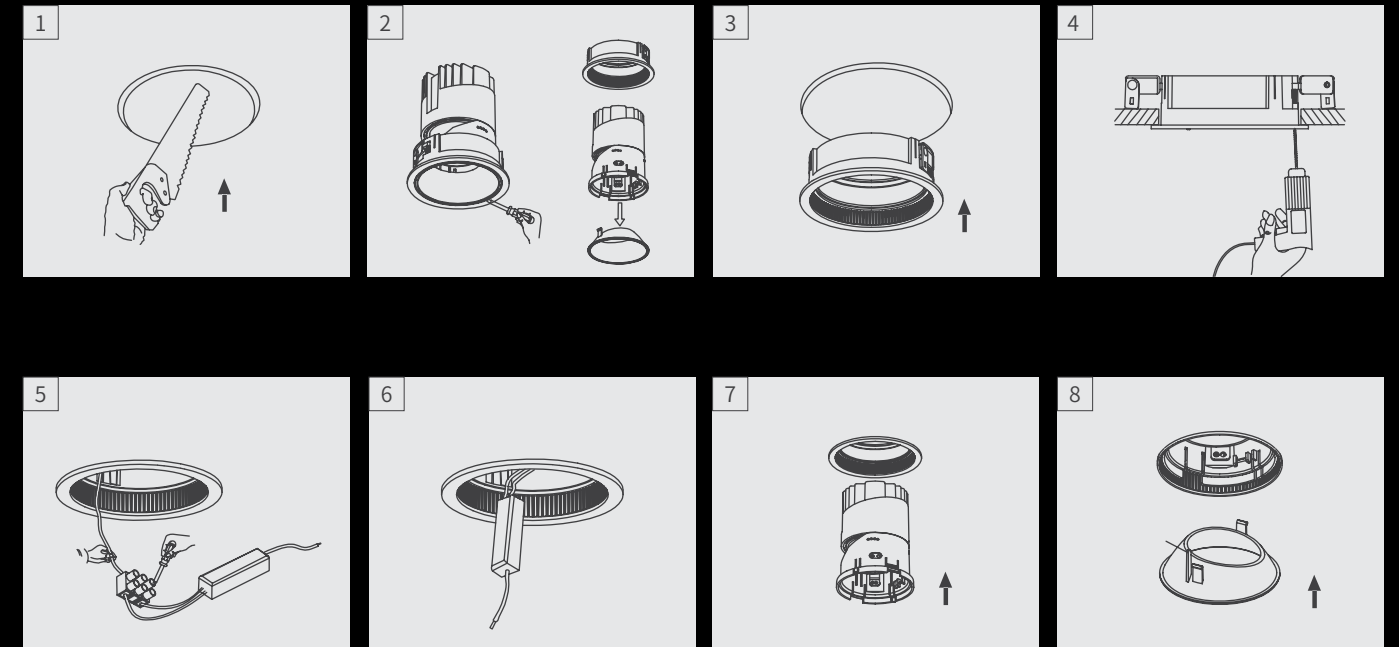


# Installation method

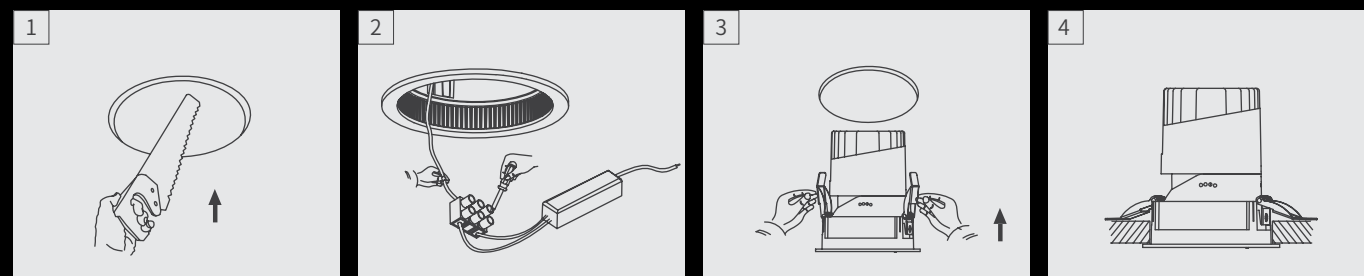
Installation method 1  
(suitable for opening size  $\Phi 95\text{mm}$ 、 $\Phi 120\text{mm}$ ):



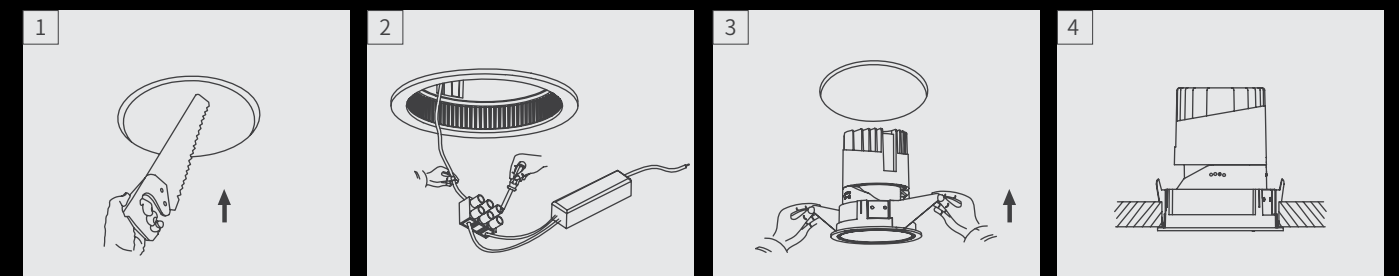
Installation method 3  
(suitable for opening size  $\Phi 95\text{mm}$ 、 $\Phi 120\text{mm}$ ):



Installation method 2  
(suitable for opening size  $\Phi 95\text{mm}$ 、 $\Phi 120\text{mm}$ ):

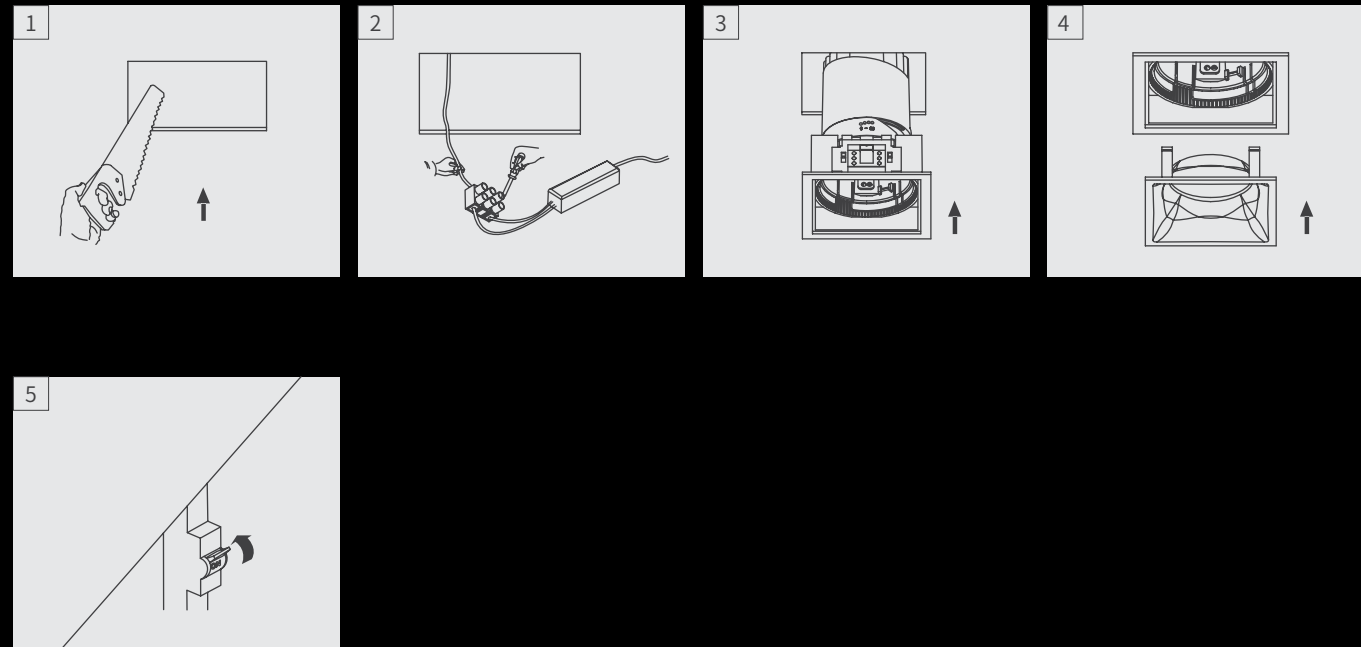


Installation method 4  
(suitable for opening size  $\Phi 95\text{mm}$ 、 $\Phi 120\text{mm}$ ):



# Installation method

Installation method 1  
(suitable for opening size 82x82mm):



Installation method of square brimless  
(suitable for opening size 82x82mm):

