

# Zeta Smart LED Panel Light



## FEATURES

An Unprecedented Innovation. So easy to fix or Detach. Moveable Spring fit all cut-size. Round hole for square panel. Aluminum heat sink inside. Super slim, 15mm thickness. 3CCT by 4 modes.

## PARAMETERS

Family Name	Zeta Smart LED Panel Light
Part Number	ZET-DLSM-XXW-XXXK-SMD-R
Input Voltage	AC200-240V
Frequency	50 / 60Hz
Power Range	6W/12W/18W/24W
Power factor	≥0.5
Power Efficiency	≥0.75
CCT	Warm White/Nature white/Pure white
CRI	RA>80
Lumen output	470±5%/1000±5%/1600±5%/2200±5%Lm
Rings Color	Polished chrome/Matt Black/stain Nickel
LED Type	SMD
Base Housing Materials	Thermal plastic body
Life Time	>50,000 Hour
Storage Temp	-20°C to +55°C
Operating Temp	-20°C to 40°C
Beam Angle	110°
Mounting	Recessed/Surface mounted
IP Rating	IP20
Warranty	Up to 5 Years



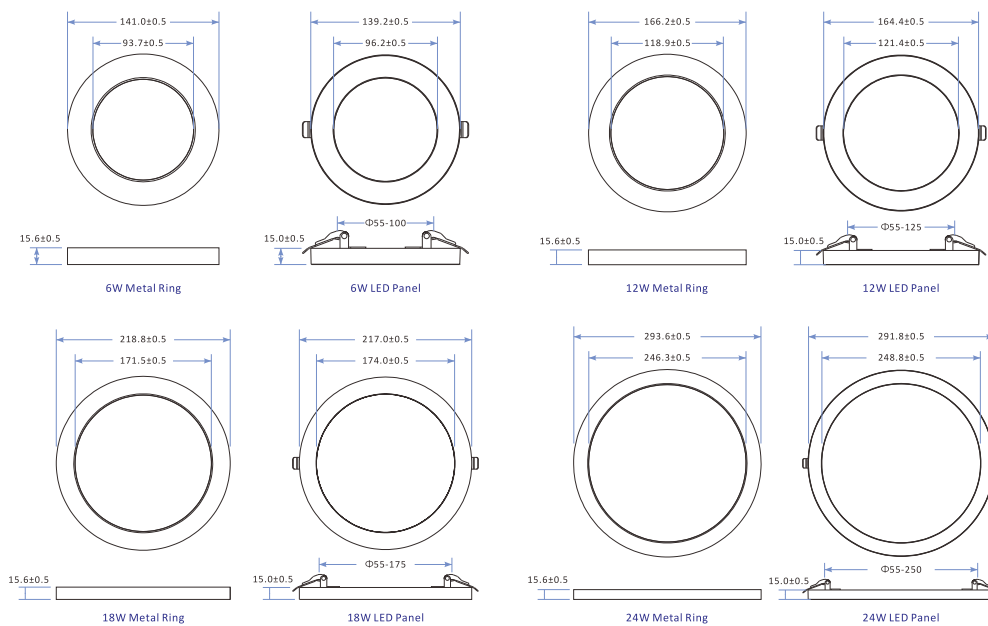
## APPLICATION

Gruenes Licht led panel light Round Ceiling Mount Lighting round light design is suitable for overall space lighting, such as staircase, hallway, corridor, balcony, bathroom, etc.

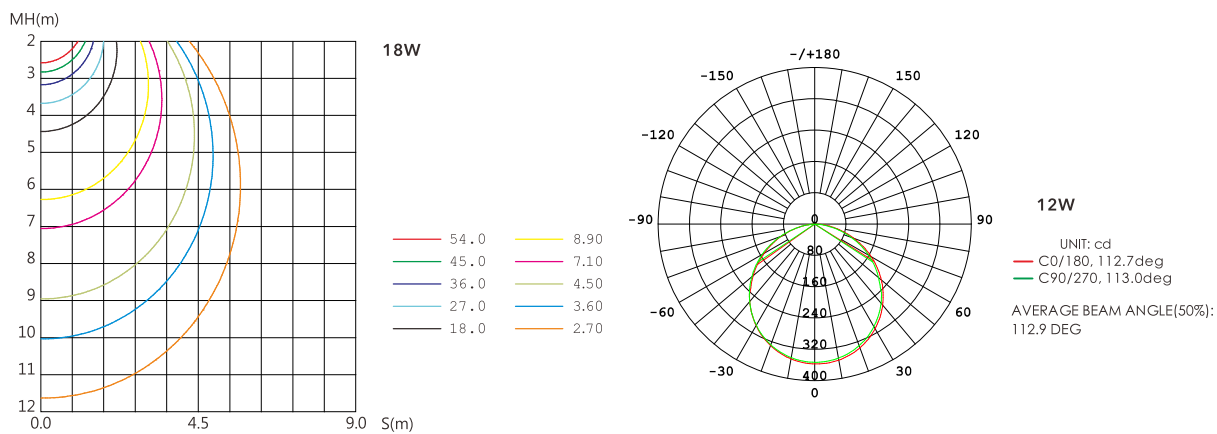
# Zeta Smart LED Panel Light

Order code	Dimensions(mm)	Power(Watt)	Lumen
ZET-DLSM-6W-XXXX-SMD-R	Ø139x15mm	6	470
ZET-DLSM-12W-XXXX-SMD-R	Ø164x15mm	12	1000
ZET-DLSM-18W-XXXX-SMD-R	Ø217x15mm	18	1600
ZET-DLSM-24W-XXXX-SMD-R	Ø292x15mm	24	2200

## DIMENSION

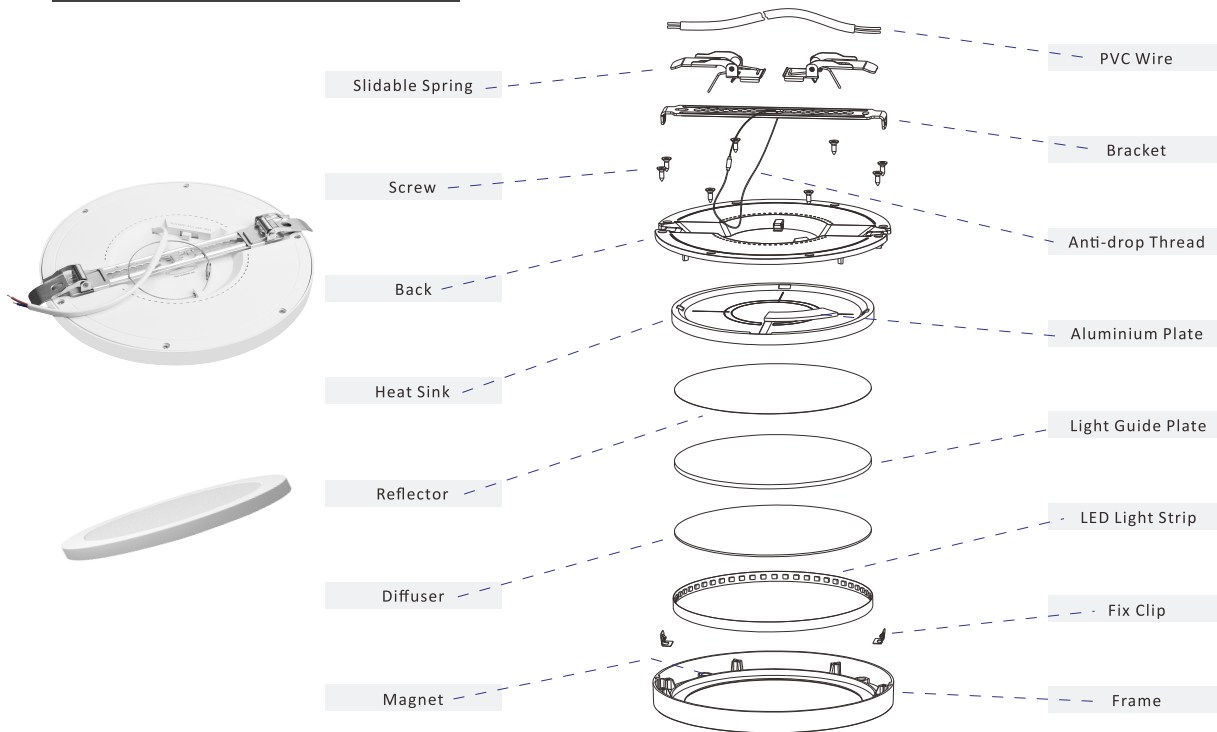


## LIGHT DISTRIBUTION

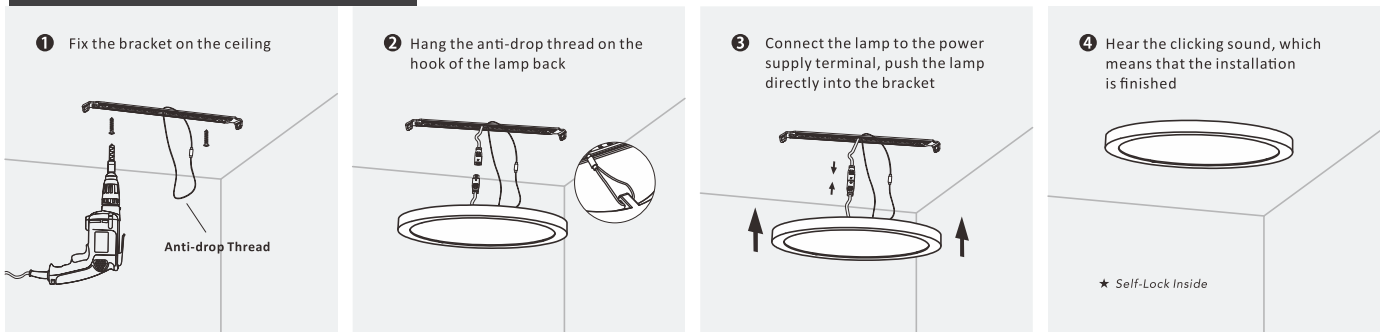


# Zeta Smart LED Panel Light

## EXPLOSIVE VIEW



## INSTALLATION



## Case B (With mounting hole ready)

